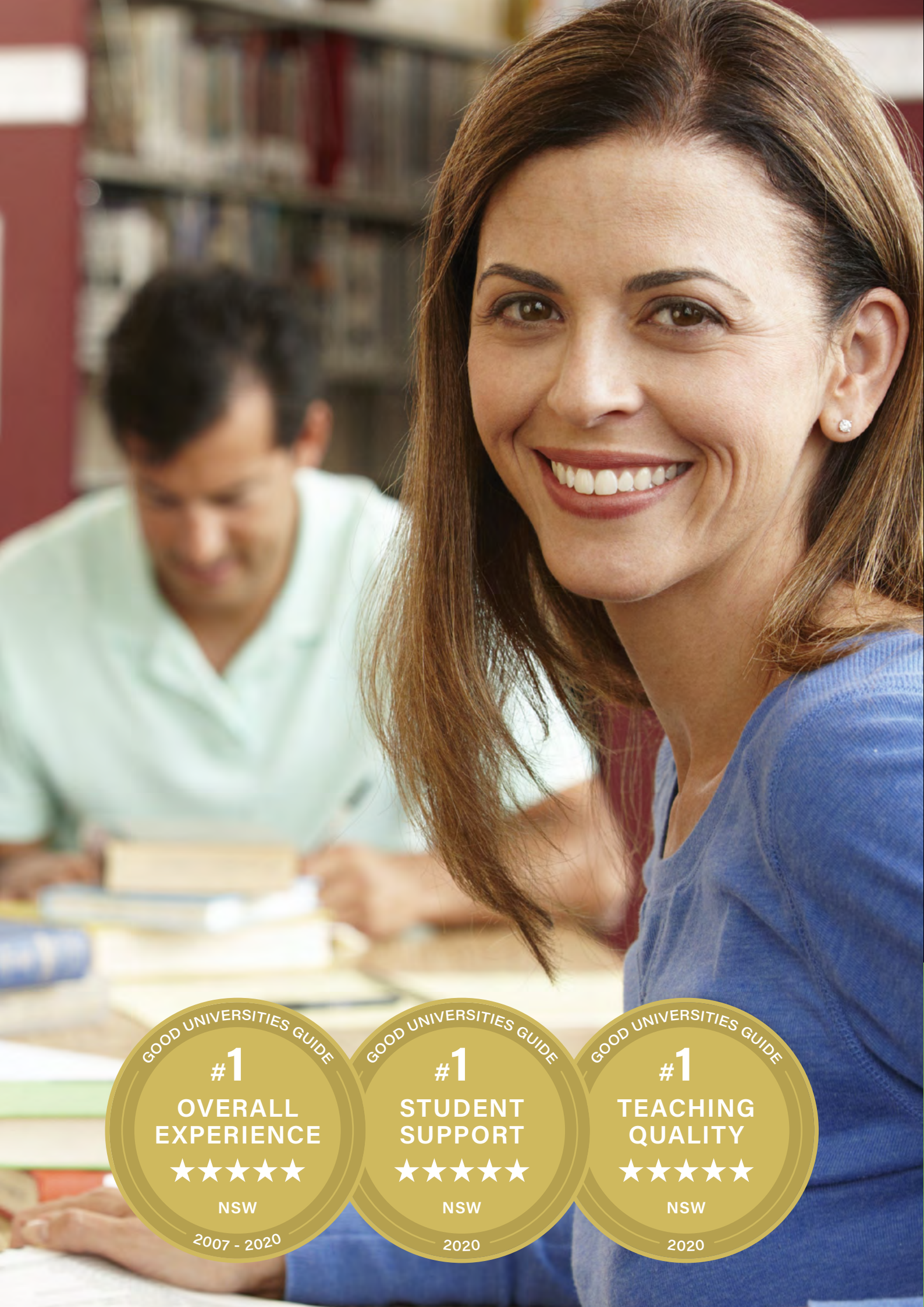


Expert **online** education at your fingertips





Study online
with UNE and
see why **our
graduates** give
us the maximum
5-star rating
year after year.*

UNE has been helping adults
study from home longer than any
other Australian university and our
students say we're the best at it.
That's what you would expect from
a university with **over 60 years of
experience in distance education.**

* The Good Universities Guide Ratings for 2007-2020. The Good Universities Guide provides the only independent performance ratings of Australian undergraduate courses and their providers.

170+
Courses
available

Flexibility

Study online across three study periods with 24/7 online tutor support. If you don't have entry qualifications, our free Pathways Enabling Course gives you entry and credit to most of UNE's undergraduate degrees.

UNE has a campus in Armidale and study centres in Parramatta, Taree, Tamworth and several locations throughout regional NSW.



Contents

Study Online	3
What is a Degree?	4 - 5
Pathways to Study	6 - 7
Cost to Study	8 - 9
How to Apply	10
Support at UNE	11
Course Information	12 - 23
Key Dates	24

GOOD UNIVERSITIES GUIDE

#1

OVERALL EXPERIENCE

★★★★★

NSW

2007 - 2020

GOOD UNIVERSITIES GUIDE

#1

STUDENT SUPPORT

★★★★★

NSW

2020

GOOD UNIVERSITIES GUIDE

#1

TEACHING QUALITY

★★★★★

NSW

2020

UNE's Bespoke Courses unlock degrees so you can study only what you need.

Until now, university education was locked up in degrees, with lots of rules that made it hard to respond quickly to a changing workplace. UNE's new Bespoke Courses provide you with freedom to study just the 2, 3 or 4 units you need and assemble them into your own short university course. Choose your units from a single degree, or 'mix and match' units from different degrees that are relevant to you.

UNE also offers the Bespoke Graduate Certificate in Professional Practice*. This course includes a genuinely

innovative process that allows you to complete with less effort, and with more career benefits, than a standard Graduate Certificate. The effort required is reduced because 25 to 50% of the course is devoted to collaborating with your academic success advisor, to articulate and demonstrate the knowledge you have already gained in your professional life. The rest of the course is made up by choosing any two or three units (depending on credit granted) from more than 1,000 units across the university.

Bespoke Course units can be selected from over 1,000 units in:

Accounting & Finance
Agriculture & Rural Science
Animal Science & Zoology
Archaeology & Indigenous Studies
Arts
Business, Management, Marketing & Human Resources
Classics, History, Philosophy & Religion
Computer Science, IT & Data Science
Economics & Agribusiness
Education & Teaching
English, Writing, Media & Communications
Environmental & Earth Sciences

Exercise & Sports Science
Geography & Planning
Languages, Linguistics & Cultural Studies
Law & Criminology
Nursing, Social Work & Health
Peace, Political & International Studies
Pharmacy and Biomedical Science
Psychology, Sociology & Social Science
Science & Mathematics
Sustainability
Theatre, Performance & Music

Bespoke Courses are available online** and offer 24/7 tutor support. You can start in March, July or November.

Design your bespoke course at une.edu.au/bespoke

* An 8 unit Graduate Diploma in Professional Practice is also available. ** Some units may have on-campus components.

Study Online

une.edu.au/study



Studying online

We know that a vital part of your success is your easy access to resources and to the rest of the online learning community, including your classmates, academic staff and support staff.

Online study means that your study can take place whenever it suits you.

How does online study work?

Instead of turning up to a lecture on campus at a designated time, the course content is provided online for you to access each week when it suits you. It might be a recorded lecture, a set of readings, questions posed in a discussion board, an online quiz or a video. Your lecturer will guide you through the unit with a weekly plan of study and will regularly check in on the discussion boards or forums. There are various ways you can communicate with teaching staff and other students.

To make sure your learning can take place when it suits you, UNE provides online facilities that allow you to send questions, submit assignments, order library books, check your results and access other resources, 24 hours a day, seven days a week.

UNE has exam centres in all major cities and many regional areas across Australia, so you don't have to travel far to sit your exams. We also offer online exams for a number of units to allow you to complete your exam in your own home. We hope to roll this technology out widely in future trimesters.

Online community

We also believe that a vital part of online study is your engagement with the learning community. Communication with your classmates, teaching staff and university support staff will enhance your study experience and ensure that your skills extend beyond just the subject matter.

Intensive schools

Some online units have intensive schools (sometimes known as residential schools). They enable students to engage in practical exercises and classes that are designed to achieve specific learning outcomes. Intensive schools are a valuable and enjoyable experience that enrich the learning process and help build your networks.

See une.edu.au/courses to find out which units have intensive schools.

Accommodation at UNE

Whether you need short term accommodation as part of your online study program, or you want to immerse yourself in the college lifestyle throughout your degree, UNE has a range of stress-free and affordable accommodation solutions to suit your needs, including modern apartments complete with your own kitchen and bathroom facilities.

For more information visit une.edu.au/living

What is a Degree?

une.edu.au/study

Undergraduate degrees

An undergraduate degree (e.g. Bachelor) is the award you receive once you have completed your course of study. It is where most first-time university students commence their tertiary studies. To obtain your degree you must complete a specified number and combination of units. Most undergraduate degrees can be completed in 3-5 years of full-time study or 6-10 years part-time.

The components of your degree

Your course is made up of a series of units. In most cases, degrees have compulsory units, referred to as 'core' units, as well as a selection from a specified range of units. Some degrees are flexible and allow you to choose units from a range of study areas; these are referred to as 'elective' units.

A unit is generally equal to 6 credit points (you will see this written as 6cp). Units that cover two trimesters are generally equal to 12 credit points.

A number of degrees include majors, which are considered as in-depth study in a specific area or discipline.

Qualification progression

The diagram opposite shows the progression of qualifications as per the Australian Qualifications Framework (AQF). You do not need to follow the AQF levels in a linear fashion. There are many different ways to progress, including exit and entry points in some qualifications. How you progress depends on the qualifications and experience you already have and qualifications you wish to obtain.

To learn more about the Australian Qualification Framework visit aqf.edu.au

Postgraduate degrees

Postgraduate programs are generally for people who have already successfully completed an undergraduate degree and/or who have significant industry experience. Postgraduate courses can be undertaken by either coursework or by research.

There are many reasons why you might undertake postgraduate study: to progress in your career, to change careers entirely or for personal fulfilment. Whatever your reason, UNE has a wide range of postgraduate degrees available, and our flexible approach to study means you don't have to stop working or even leave home to study.

Postgraduate coursework degrees

Postgraduate coursework degrees include Graduate Certificates, Graduate Diplomas and Masters. Particular Masters degrees have Graduate Certificates and Graduate Diplomas as entry points. Alternatively, some Masters degrees offer an exit pathway in the form of a Graduate Certificate or Graduate Diploma.

For more information about specific coursework degrees visit une.edu.au/courses

Postgraduate research degrees

This is your chance to shine, to study what you are passionate about, and make an original contribution to research in your field.

A postgraduate research degree can be either at Masters level, which is usually of 2 years duration, or at doctorate level which is of 3-4 years duration. Doctorates are the highest level of academic achievement, where you will develop advanced skills in research, critical thinking and problem solving.

UNE's staff and students make a significant contribution to research across a diverse range of areas. We are renowned for providing high-quality research training both domestically and internationally.

For more information about UNE's research opportunities visit une.edu.au/research

Browse & explore

Once you have answered the questions above, start browsing the different study areas in this brochure, or online at my.une.edu.au/courses This will help you to get a general feel for what you will learn and how particular qualifications will assist you in achieving your goals.

You will also find details about all of the courses available at UNE, including a course overview and rules, duration, study options and entry requirements.

What should you study?

Things to consider when deciding what to study include:

Your areas of interest—students always do better when studying something they are interested in.

Career goals—are you seeking:

- professional qualifications to progress in your career;
- to change careers, or;
- personal enrichment or fulfilment?

Other considerations

- What current qualifications/work experience do you have?
- Would you like to study full-time or part-time?
- When would you like to commence?
- If considering postgraduate study, would you like to complete a qualification by coursework or by research?

This diagram shows the different levels of qualifications available through tertiary study, and which institutions offer them.

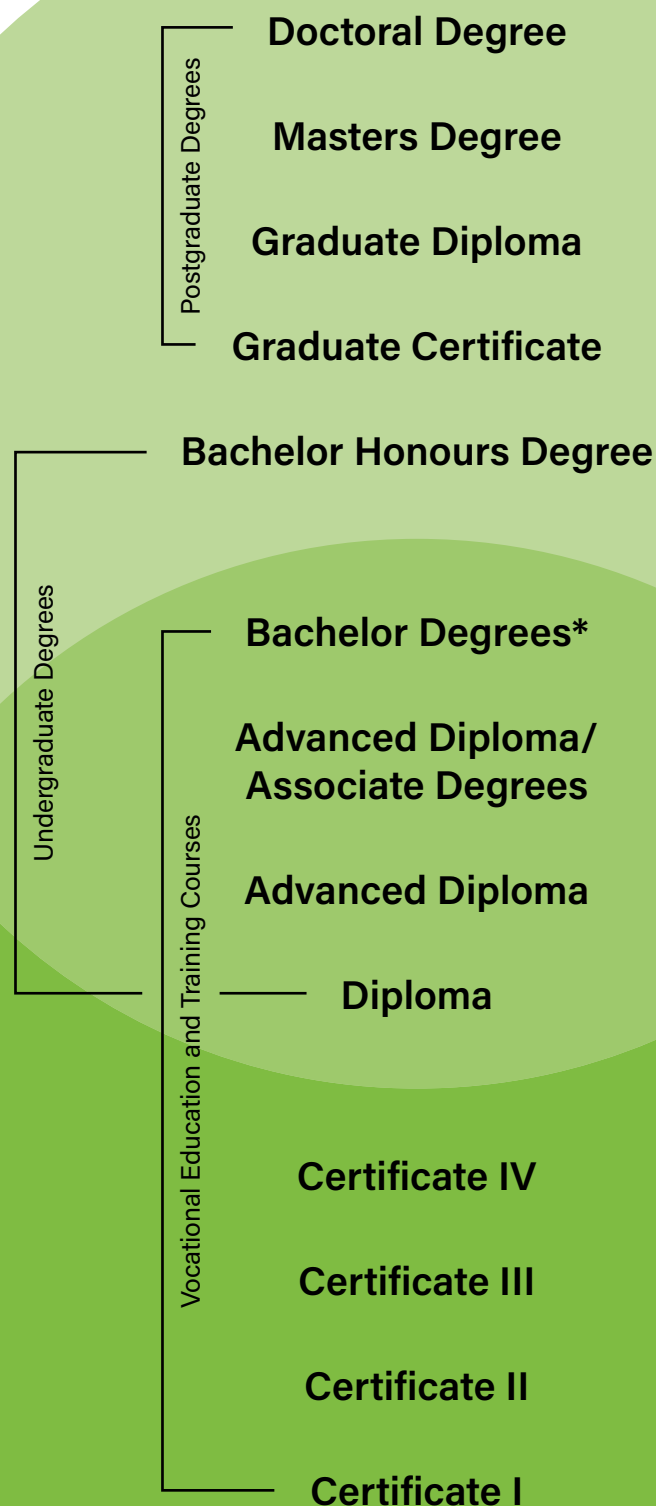
UNI

RTO

(Registered Training Organisation)

e.g. UNE Partnerships or TAFE

*A Bachelor's degree is where most first time students start.



Pathways to Study

une.edu.au/ofcourse



Entry Pathways

If it's been a while since you last studied or if you don't have entry qualifications, UNE offers a range of pathways to help get you on your way, such as the Pathways Enabling Course.

Pathways Enabling Course*

The Pathways Enabling Course is a program of study for students without the educational background for admission to an undergraduate degree at UNE.

The Pathways Enabling Course is studied fully online*, has no tuition fees and will give you entry into most UNE undergraduate degrees

You'll receive mentoring and additional tutorial support through two foundation units, which provide you with the skills and confidence required for successful undergraduate study. You then choose two units from a range of academic units, making sure they are part of the degree you want to enrol in later. On successful completion of these units they may be credited towards your degree – so when you start your degree, you'll already be two units ahead!

For more information visit une.edu.au/enabling

*Some units may require attendance at intensive schools.

Science Pathways

Want to study Science at UNE but don't have the background? Follow Science Pathways.

The Science Pathways program, in the Bachelor of Scientific Studies, is designed for students who may have little or no scientific background. It aims to build the skills and knowledge that will allow students to be accepted into other, more specialised science-based degrees.

The Science Pathways program includes foundation units in basic sciences to get you up to speed. In addition, the program lets you choose units from a range of specific study pathways. On completion of the Science Pathways program you can transfer into the science degree of your choice, with credit for units already completed.

For more information see page 21 or visit une.edu.au/science-pathways

Mature Age Special Entry

UNE provides for "Mature Age Special Entry" as an alternative entry pathway for undergraduate applicants without educational qualifications such as an ATAR or equivalent. As an applicant, you have the opportunity to make your case for studying at UNE based on your motivation, commitment and aptitude. Your supporting case should explain how your education, work and life experiences demonstrate that you have competencies relevant to your intended university studies.

For more information visit une.edu.au/pathways

Foundation units

Some degrees at UNE have "assumed knowledge" or "recommended study" requirements for mathematics, chemistry or physics. If you don't meet these recommendations or don't feel confident with your knowledge, UNE offers a range of foundation units, to ensure you get the basics right. Some units are offered within degrees, so you can complete these units as part of your study. Alternately, short foundation courses may be available prior to the commencement of trimester.

For more information visit une.edu.au/foundation

TRACKS Tertiary Preparation Program**

TRACKS is a tertiary preparation course for Aboriginal and Torres Strait Islander students who would like to develop academic skills and knowledge to undertake undergraduate studies at UNE. You will be part of a community of Aboriginal and Torres Strait Islander students who share your goals and interests. During the course you will build confidence and academic skills through flexible learning. You will also take an undergraduate unit in your area of interest that may count towards your UNE degree. On successful completion of the TRACKS course you will be eligible to apply for UNE undergraduate study.

For more information visit une.edu.au/oorala

** Eligible domestic students are exempt from the student contribution amount for HECS and the Student Services and Amenities Fee (SSAF).

Special Tertiary Admissions Test (STAT)

The Special Tertiary Admissions Test (STAT) is a series of related tests designed to assess a range of competencies that are considered important for success in tertiary study.

STAT assesses your ability to understand the material given and to think critically about issues, rather than to test

knowledge of curriculum or a specific academic subject. UNE accepts the multiple choice version of STAT. In NSW and ACT, STAT is managed by the Australian Council for Educational Research (ACER).

For more information visit www.stat.acer.org

VET pathways

The University has agreements with several training organisations that recognise prerequisite qualifications and advanced standing for university courses. These include UNE Partnerships, TAFE, the Australian Agricultural Colleges Corporation and the Australian Defence Force.

Credit for previous study (Advanced Standing)

Your prior study at university, TAFE or private educational providers may give you advanced standing or credit towards your degree. This will reduce the amount of time you need to study.

For more information visit une.edu.au/advanced-standing

UNE Partnerships

UNE Partnerships is the Registered Training Organisation (RTO) of UNE, offering a range of vocational programs for career and professional development.

Our qualifications provide alternative pathways into the University of New England. UNE Partnerships qualifications develop skills through workplace learning, ensuring new knowledge is directly relevant to the work environment.

UNE Partnerships' flexible approach to education allows you to organise study around your existing schedule.

For more information call 1800 066 128 or visit unep.edu.au

 **unepartnerships**
creating professional success

UNE Partnerships Pathways to UNE

Certificate

- Business
- Facilities Management
- Government
- Frontline Management
- Practice Management
- Project Management
- Training & Assessment

Diploma

- Business
- Management
- Government
- Facilities Management
- Practice Management
- Project Management
- Training & Assessment

Advanced Diploma

- Management
- Human Resources
- Project Management

University Articulation*

- Bachelors
- Graduate Certificate
- Masters

* Subject to UNE entry requirements

How much does it cost to study at UNE?

The amount you pay for a degree depends on a few things – whether you get a Commonwealth Supported Place (CSP) or a Full-Fee place, your residency and which cost ‘band’ the units of your degree fall within.

Undergraduate degrees

The majority of undergraduate courses at UNE have Commonwealth Supported Places (CSP) available**, which you can apply for provided you are an eligible domestic student and meet the residency requirements. This means the Australian government makes a contribution covering a portion of the cost of your degree and you pay the difference between this contribution and the total cost of the degree.

For more information visit studyassist.gov.au

Postgraduate degrees

Most postgraduate coursework degrees at UNE have both Commonwealth Supported Places (CSP) and Full Fee places available**. A Full Fee place means you pay for the full cost of the course. The Full Fee amount you are required to pay will depend on the course or cluster your unit of study falls under. If you are admitted into a Full Fee course, you may be eligible for a Government loan called FEE-HELP.

For more information visit studyassist.gov.au

Postgraduate research degrees

Students studying for a research degree may also be eligible for a Research Training Program (RTP) place. The Research Training Program provides an exemption from unit tuition fees.

For more information visit une.edu.au/rtp

Student contribution bands for CSP

Within a CSP** there are seven different ‘bands’ of costs, divided by discipline areas. Known as Student Contribution Bands, (see table below), they show the fees you will be charged per unit in each band, i.e. the difference between what the government contributes and the total cost of the fees.

The fees a student pays are calculated on an individual basis. This is due to the different bands and study loads a student undertakes each year and because the student contribution amounts change annually. For example, if you study a Bachelor of Arts, you might choose units in humanities, commerce and statistics. These units are all in different contribution bands and have different costs.

****Please note:** there are a limited number of Commonwealth Supported Places (CSP) available each year. CSP are subject to availability when you apply.

2020 Student Contribution Bands

Student contribution bands ^{†^} (charges per unit or 6 credit points)	CSP Rates
BAND 1: Arts, Humanities, Behavioural Science, Social Studies, Clinical Psychology, Foreign Languages, Visual and Performing Arts	\$835.00
BAND 2: Computing, Built Environment, Allied Health, Other Health, Agriculture	\$1190.00
BAND 3: Law, Dentistry, Medicine, Veterinary Science	\$1394.00
BAND 4: Education, Nursing	\$835.00
BAND 5: Accounting, Administration, Economics, Commerce	\$1394.00
BAND 6: Mathematics, Statistics, Science	\$1190.00
BAND 7: Engineering, Surveying	\$1190.00

[†] Charges per 6 credit point (cp) unit. If the unit is 12 credit points then the cost above will be x 2.
[^] Costs correct at time of printing. Some exceptions apply. For full details on how much you can expect to pay, visit studyassist.com.gov.au

Payment options*

For Commonwealth Supported Places, you have several payment options open to you. If you are an Australian citizen, permanent humanitarian visa holder or an eligible New Zealand Special Category Visa holder you may:

- pay the total unit cost up front; or
- defer the payment until you start earning over the minimum income threshold” (2019-2020 repayment threshold is \$45,881— see HECS-HELP information below); or
- pay some of the amount up front and defer the rest.

For more information on eligibility visit studyassist.gov.au

HECS-HELP*

HECS-HELP is a loan program to help eligible Commonwealth Supported students to pay their student contribution amounts. To be eligible for a HECS-HELP loan, you must be studying in a Commonwealth Supported Place and be an Australian citizen or permanent humanitarian visa holder. Eligible New Zealand Special Category Visa holders may also be eligible for HECS-HELP. Essentially, the HECS-HELP loan scheme lets you defer the payment of your student contribution until you reach the minimum income threshold (which is \$45,881 for the 2019-2020 income year).

For more information visit studyassist.gov.au

FEE-HELP*

FEE-HELP is a loan for eligible domestic Full Fee paying students. These places are not subsidised by the government and tuition fees are set by the approved providers. FEE-HELP is available at public universities as well as approved FEE-HELP providers.

What’s the difference between HECS-HELP and FEE-HELP?

HECS-HELP is only available to students who have a Commonwealth Supported Place (CSP) for their study**. A CSP is subsidised by the Government so that students only pay the Student Contribution Amount for their units of study. FEE-HELP is a loan for eligible students who have a Full-Fee place for their study.

HELP may be available for Australian citizens, Permanent Humanitarian Visa holders and eligible New Zealand Special Category Visa holders. Existing FEE-HELP, VET FEE-HELP and VET Student Loan debts will be carried over and count towards your HELP loan limit.

Any previous HECS-HELP debts will not be included in the HELP loan limit. From 1 January 2020 onwards, new HECS-HELP borrowing will count towards the limit.

*Please note the payment options and HECS-HELP information are correct at the time of printing. For updates please visit studyassist.gov.au
**Please note not all students eligible for CSPs are eligible for HELP. ^^Source Australian Taxation Office www.ato.gov.au

Student Amenities Fee

The Student Services and Amenities Fee (SSAF) is charged to students for services and amenities of a non-academic nature, such as sporting and recreational activities, employment and career advice, child care, financial advice and food services.

Eligible students have the option of deferring Student Services and Amenities Fees through the SA-HELP scheme.

The Student Services and Amenities fee is applied to all on campus and online coursework students. In 2020 SSAF is charged at the rate of \$38.50 per 6 credit points (a typical unit at UNE is 6 credit points) to the annual full time maximum of \$308. The fee will be invoiced per study period and payable by the census date.

For more information visit: une.edu.au/ssaf

Bespoke Course Fee

UNE’s Bespoke Courses give you the freedom to choose and pay for only the parts of a degree you need (see page 2 for course details). Our Bespoke Courses are offered as full fee, which means you pay up-front for each course you commence.

The cost for your first two units is \$3,399 each. If you decide to design a three or four unit Bespoke Course, the cost for the third and fourth units drops to \$3,244 each. UNE has collaborated with Regional Australia Bank to provide students with a competitive low interest finance option to help defer the unit fees.

For more information visit bespokecourses.com.au

Self-Education Tax Deductions^^

If you are an Australian citizen you may be eligible for a self-education tax deduction on Full Fee places. Self-education expenses are deductible when the course you undertake leads to a formal qualification and meets the following conditions:

The course must have a sufficient connection to your current employment and:

- maintain or improve the specific skills or knowledge you require in your current employment, or
- result in, or is likely to result in, an increase in your income from your current employment.

What can you claim?

To find out what you can claim as self-education tax deductions check with your accountant or visit the Australian Taxation Office ato.gov.au

Visit une.edu.au/fees for detailed info on fees, loans and deductions, plus our **Fee Category Finder** tool to help determine your eligibility and payment options.

How you apply to study at UNE will generally depend on how you want to study with us, either online or on campus, and also whether you will be studying an Undergraduate or Postgraduate course.

How to Apply to UNE

If you are planning to study with UNE, you will need to follow the application process below. For more information visit une.edu.au/study

Step 1: Prepare

Check out the courses/entry requirements* at my.une.edu.au/courses

Step 2: Apply

Apply online at une.edu.au/apply

Step 3: Offer

Wait to receive and accept your offer of admission.

Step 4: Enrol

Enrol or defer (if eligible) your offer of admission for up to 1 year.

* If you have overseas qualifications and you are an Australian citizen or permanent resident please contact us for advice prior to applying. If you are an International student, visit une.edu.au/international

Need more information?

Contact UNE Future Students Team on **1800 818 865** or via our **online chat service**, or make an enquiry 24/7 at study.une.edu.au



How we support you at UNE

At UNE you get more than just a degree. The support we offer to our students is a big part of what makes UNE special. You won't get lost in the crowd.

Academic Skills Office

The Academic Skills Office (ASO) is UNE's learning support to help you to succeed and excel in your studies. The ASO will help you to study more effectively and improve your results.

For more information visit une.edu.au/aso

Student Support Team

At UNE we want to be sure your study journey throughout your degree is as smooth as possible.

Student Support Team services include:

- career development
- counselling
- special needs support
- one-to-one support and troubleshooting

Staff are available to work with you throughout your time at UNE.

For more information visit une.edu.au/student-assist

Library Services

The University Library provides access to a wide range of information in electronic form and houses a large collection of books, journals and audio-visual material in the Dixon Library and the Law Library. In addition, the Dixon Library hosts the Learning Commons where you will find computers, media rooms, a podcasting studio, group study rooms and rooms for problem-based learning. Many of the resources found within the libraries are available online so you can do your own research at home or on campus.

For more information visit une.edu.au/library

Childcare

Yarm Gwanga provides long term (full day and sessional), intensive school and vacation care.

For more information visit yarmgwangachildcare.com.au

Oorala Aboriginal Centre

Oorala is the study and advisory support centre for Aboriginal and Torres Strait Islander students enrolled at the University of New England. From your very first visit to UNE, right throughout your studies until completion of your degree and graduation, Oorala is here to support you. Whether you are enrolled on campus or studying online, the centre assists you with enquiries and referrals about courses, academic advice, accommodation, Abstudy, scholarships and cadetships. Oorala also offers tutoring through the Indigenous Tutorial Assistance Scheme (ITAS), computer and study facilities, and activities to engage with other students and the local Aboriginal community.

For more information visit une.edu.au/oorala

24/7 Online Tutor Support

With UNE's tutor support you can upload a draft assignment 24/7 and get detailed feedback in less than 24 hours. Academic literacy and assignment support is also available for essay and report writing, assignment research, referencing and citation and study skills. Online after hours support (3pm-12am) is available for foundation skills in maths, science and business studies as well as first year accounting, economics and statistics. UNE also offers many academic skills workshops via video conference. The workshops offered include subject-area specific sessions in writing and study skills. We also have a wealth of online resources available to all students to help with assignments and exam preparation.

Other Opportunities

There are a range of options available to enhance your study at UNE, including

- opportunities for leadership and teamwork through community participation
- parliamentary internships
- international exchange programs as credit towards your UNE degree
- personal and academic support programs
- links and partnerships with industry, research organisations and training bodies.

Course Information

Bespoke Courses	13	Environmental and Earth Sciences	18
Accounting and Finance	13	Exercise and Sports Science	18
Agriculture and Rural Science	13	Geography and Planning	18
Animal Science and Zoology	13	Languages, Linguistics and Cultural Studies	18
Archaeology and Indigenous Studies	14	Law and Criminology	19
Arts	14	Mathematics, Statistics, Chemistry and Physics	19
Business, Management, Marketing and HR	14	Medicine	20
Classics, History, Philosophy and Studies in Religion	15	Nursing, Social Work and Health	20
Computer Science, Information Technology and Data Science	15	Peace, Political and International Studies	20
Criminology and Forensic Science	16	Pharmacy, Biology and Biomedical Science	21
Economics and Agribusiness	16	Psychology, Sociology and Social Science	21
Education and Teaching	17	Science	21
English, Writing, Media and Communications	17	Sustainability	22
		Theatre, Performance and Music	22

Please Note:

- Competence in the English language is a requirement for all University of New England courses.
 - Foundation level units in Chemistry, Mathematics and Physics are available for students who do not have a background in these areas. See page 6 or visit une.edu.au/foundation for further information.
 - In the **Durations** field, the *less than or equal to* symbol (≤) indicates that the course can be completed in *up to* the duration listed. e.g. ≤ **4y Part Time** means that the course can be completed in **up to 4 years Part Time**.
 - UNE is committed to providing transparent and clear admissions advice to applicants. For published information including student profiles of recent undergraduate enrolments and (where relevant) ATAR profiles of recent offers of admission, visit une.edu.au/transparency
- Entry Requirements: most postgraduate courses require an AQF Level 7 Bachelor degree in a relevant discipline as a minimum for admission. For specific entry requirements, minimum assumed knowledge and advanced standing information visit the URL listed with the study area of interest.
- For more information contact **UNE Future Students Team** by calling **1800 818 865** or ask a question via our 9am-5pm chat service or make an enquiry 24/7 at study.une.edu.au

Course Name	Majors Available	Duration
Bespoke Courses		
Graduate Certificate in Professional Practice		0.5y Full Time / 2y Part Time
Graduate Diploma in Professional Practice		1y Full Time [#] / ≤ 4y Part Time

[#]Depending on entry pathway into course.

Accounting and Finance

une.edu.au/accounting

UNDERGRADUATE		
Diploma in Business	Indigenous Organisation Management	1y Full Time / ≤ 4y Part Time
Bachelor of Accounting	Advanced Accounting, Agribusiness, Finance, Business Analysis and Transformation	3y Full Time / ≤ 10y Part Time
Bachelor of Business	Accounting, Agribusiness, Analytics and Informatics, Business Analytics, Economics, Finance, Human Resource Management, International Business, Management, Marketing	3y Full Time / ≤ 10y Part Time
Australian Defence Force personnel may be eligible for 16 units of advanced standing [†]		
Bachelor of Commerce (Financial Planning)*		3y Full Time / ≤ 6y Part Time

*UNE is in the process of revising the Bachelor of Commerce (Financial Planning) and Master of Commerce (to be renamed the Master of Financial Planning) in order to respond to the FASEA requirements for education standards for financial advisers. [†]Two years (16 units) of advanced standing granted on successful admission. See page 25.

POSTGRADUATE		
Graduate Certificate in Accounting		≤ 2y Part Time
Graduate Certificate in Financial Planning		≤ 2y Part Time
Graduate Diploma in Accounting		1y Full Time / ≤ 4y Part Time
Graduate Diploma in Financial Planning		≤ 2y Part Time
Accredited by Financial Adviser Standards and Ethics Authority (FASEA)		
Master of Commerce (Financial Planning)**		≤ 4y Part Time
Master of Professional Accounting		≤ 2y Full Time [#] / ≤ 6y Part Time

[#]Depending on entry pathway into course.

Agriculture and Rural Science

une.edu.au/agriculture

UNDERGRADUATE		
Diploma in Agriculture		≤ 4y Part Time
Bachelor of Agricultural and Resource Economics		4y Full Time / ≤ 10y Part Time
Bachelor of Agriculture	Animal Production, Plant Production, General Agricultural Production, Technology	3y Full Time / ≤ 10y Part Time
Bachelor of Agriculture/Bachelor of Business	Accounting, Agribusiness, International Business, Marketing	4y Full Time / ≤ 10y Part Time
Bachelor of Agriculture/Bachelor of Laws		5y Full Time / ≤ 12y Part Time
Bachelor of Rural Science		4y Full Time / ≤ 10y Part Time

POSTGRADUATE		
Graduate Certificate in Agriculture	Agricultural Consulting, Animal Science, Canine Management, Cotton Production, Precision Agriculture, Sustainable Grains Production	≤ 4y Part Time
Master of Science in Agriculture		≤ 2y Full Time [#] / ≤ 6y Part Time

[#]Depending on entry pathway into course.

Animal Science and Zoology

une.edu.au/animals

UNDERGRADUATE		
Bachelor of Animal Science	Canine and Equine Science, Livestock Production, Wildlife Management	4y Full Time / ≤ 10y Part Time
Bachelor of Science	Animal Science and Veterinary Studies, Zoology	3y Full Time / ≤ 10y Part Time
Bachelor of Zoology		3y Full Time / ≤ 10y Part Time
POSTGRADUATE		
Master of Scientific Studies		2y Full Time / ≤ 6y Part Time

Course Name	Majors Available	Duration
Archaeology and Indigenous Studies		
une.edu.au/archaeology-courses		
UNDERGRADUATE		
Bachelor of Arts	Archaeology, Human Geography, Indigenous Studies	3y Full Time / ≤ 10y Part Time
Bachelor of Science	Archaeology, Palaeobiology	3y Full Time / ≤ 10y Part Time
Bachelor of Social Science	Aboriginal Perspectives	3y Full Time / ≤ 10y Part Time
Bachelor of Sustainability	Cultural Heritage Management	3y Full Time / ≤ 10y Part Time
POSTGRADUATE		
Master of Arts	Archaeology, Indigenous Studies**	≤ 2y Full Time# / ≤ 6y Part Time
**Not all majors are available for all candidates. #Depending on entry pathway into course.		

Arts		
une.edu.au/arts-courses		
UNDERGRADUATE		
Diploma in Arts		1y Full Time / ≤ 4y Part Time
Advanced Diploma in Arts	See Bachelor of Arts listing below for available minors	1.5y Full Time / ≤ 6y Part Time
Bachelor of Arts	Ancient History, Ancient Near East, Archaeology, Australian History, Chinese, Classical Languages, Criminology, English, French, German, History, Human Geography, Indigenous Studies, Indonesian, International History, Islamic Studies, Italian, Japanese, Linguistics, Music, Peace Studies, Philosophy, Physical Geography, Political and International Studies, Psychology, Screen and Media Studies, Sociology, Spanish, Studies in Religion, Theatre and Performance, Writing	3y Full Time / ≤ 10y Part Time
Bachelor of Arts/Bachelor of Business	See Bachelor of Arts (and Bachelor of Business) for available majors.	4y Full Time / ≤ 10y Part Time
Bachelor of Arts/Bachelor of Laws	See Bachelor of Arts for available majors.	5y Full Time / ≤ 12y Part Time
Bachelor of Arts/Bachelor of Science	See Bachelor of Arts (and Bachelor of Science) for available majors.	4y Full Time / ≤ 10y Part Time
POSTGRADUATE		
Graduate Certificate in Arts	Ancient History, Ancient Near East, Archaeology, Asian Studies, Chinese Studies, Classical Languages, English, Environmental Advocacy, French Studies, Geography, German Studies, History, Indigenous Studies, Indonesian Studies, Italian Studies, Linguistics, Media and Communications, Peace Studies, Philosophy, Political and International Studies, Regional Change Management, Sociology, Studies in Religion, Theatre and Performance, Writing**	≤ 4y Part Time
Master of Arts	Ancient History, Ancient Near East, Sociology, Archaeology, Asian Studies, Chinese Studies, Classical World, English, Environmental Advocacy, French Studies, Geography, History, German Studies, Indigenous Studies, Indonesian Studies, Italian Studies, Linguistics, Media and Communications, Music, Peace Studies, Philosophy, Political and International Studies, Regional Change Management, Studies in Religion, Theatre and Performance, Writing**	≤ 2y Full Time# / ≤ 6y Part Time
#Depending on entry pathway into course. **Not all majors are available for all candidates.		

Business, Management, Marketing and HR		
une.edu.au/business		
UNDERGRADUATE		
Diploma in Business	Indigenous Organisation Management	1y Full Time / ≤ 4y Part Time
Bachelor of Agribusiness	Accounting, Economics, Finance, Marketing and Management	3y Full Time / ≤ 10y Part Time
Bachelor of Agriculture/Bachelor of Business	Accounting, Agribusiness, International Business, Marketing	4y Full Time / ≤ 10y Part Time
Bachelor of Arts/Bachelor of Business	See Bachelor of Business (and Bachelor of Arts) for available majors.	4y Full Time / ≤ 10y Part Time
Bachelor of Business	Accounting, Agribusiness, Business Analytics, Analytics and Informatics, Economics, Finance, Human Resource Management, International Business, Management, Marketing	3y Full Time / ≤ 10y Part Time
Accredited Australian Human Resources Institute (AHRI) (Human Resource Management major only)		
Australian Defence Force personnel may be eligible for 16 units of advanced standing†		
Bachelor of Business/Bachelor of Economics	See Bachelor of Business (and Bachelor of Economics) for available majors.	4y Full Time / ≤ 10y Part Time
Bachelor of Business/Bachelor of Laws	See Bachelor of Business for available majors.	5y Full Time / ≤ 12y Part Time
Bachelor of Languages and International Business [‡]		4y Full Time / ≤ 10y Part Time

Course Name	Majors Available	Duration
Bachelor of Organisational Leadership*		
Australian Defence Force personnel may be eligible for 16 units of advanced standing†		
1y F/ ≤ 4y Part Time		
Bachelor of Training and Development*		
Australian Defence Force personnel may be eligible for 16 units of advanced standing†		
≤ 4y Part Time		
†Two years (16 units) of advanced standing granted on successful admission. See page 25. *Involves mandatory overseas language study. *Additional entry requirements apply. See my.une.edu.au		
POSTGRADUATE		
Graduate Certificate in Business		0.5y Full Time / ≤ 2y Part Time
Graduate Certificate in Human Resource Management		≤ 2y Part Time
Graduate Certificate in Management		≤ 2y Part Time
Graduate Certificate in NDIS Business Development		≤ 2y Part Time
Master of Business Administration	Human Resource Management	≤ 6y Part Time
Accredited Australian Human Resources Institute (AHRI) (Human Resource Management major only)		
Master of Information Technology (Business)		≤ 2y Full Time# / ≤ 6y Part Time
Accredited by the Australian Computer Society (ACS), and recognised, through the Seoul Accord, in other countries		
Master of Business Administration (International)		≤ 2y Full Time# / ≤ 6y Part Time
Master of Strategic Organisational Development and Human Resource Management		≤ 6y Part Time
Accredited by the Australian Human Resource Institute (AHRI)		
#Depending on entry pathway into course.		

Classics, History, Philosophy and Studies in Religion		
une.edu.au/classics		
UNDERGRADUATE		
Advanced Diploma in Local, Family and Applied History		1.5y Full Time / ≤ 6y Part Time
Bachelor of Arts	Ancient History, Ancient Near East, Archaeology, Australian History, Classical Languages, History, Indigenous Studies, International History, Islamic Studies, Studies in Religion	3y Full Time / ≤ 10y Part Time
Bachelor of Historical Inquiry and Practice		3y Full Time / ≤ 10y Part Time
Bachelor of Social Science	Social Philosophy	3y Full Time / ≤ 10y Part Time
POSTGRADUATE		
Graduate Diploma in Local, Family and Applied History		1.5y Full Time / ≤ 6y Part Time
Master of Arts	Ancient History,Ancient Near East, Classical World, Philosophy, Studies in Religion, History**	≤ 2y Full Time# / ≤ 6y Part Time
Master of History		≤ 2y Full Time# / ≤ 6y Part Time
**Not all majors are available for all candidates. #Depending on entry pathway into course.		

Computer Science, Information Technology and Data Science		
une.edu.au/it		
UNDERGRADUATE		
Diploma in Information Technology		1y Full Time / ≤ 4y Part Time
Bachelor of Computer Science	Data Science, Software Development	3y Full Time / ≤ 10y Part Time
Accredited by Australian Computer Society (ACS)		
Bachelor of Computer Science/Bachelor of Laws		5y Full Time / ≤ 12y Part Time
Accredited by Australian Computer Society (ACS)		
Bachelor of Science	Computational Science	3y Full Time / ≤ 10y Part Time
POSTGRADUATE		
Graduate Certificate in Data and Cyber Management		0.5y Full Time /≤ 2y Part Time

Course Name	Majors Available	Duration
Graduate Certificate in Data Science		0.5y Full Time / ≤ 2y Part Time
Graduate Certificate in Information Technology		0.5y Full Time / ≤ 2y Part Time
Graduate Diploma in Data Science		1y Full Time / ≤ 4y Part Time
Graduate Diploma in Information Technology Accredited by Australian Computer Society (ACS)		≤ 4y Part Time
Master of Computer Science		≤ 1.5y Full Time [#] / ≤ 6y Part Time
Master of Data Science Accredited by Australian Computer Society (ACS)		≤ 2y Full Time [#] / ≤ 6y Part Time
Master of Information Technology Accredited by Australian Computer Society (ACS)		≤ 2y Full Time [#] / ≤ 6y Part Time
Master of Information Technology (Business) Accredited by Australian Computer Society (ACS)		≤ 2y Full Time [#] / ≤ 6y Part Time

[#]Depending on entry pathway into course.

Criminology and Forensic Science

UNDERGRADUATE		
Bachelor of Arts	Criminology	3y Full Time / ≤ 10y Part Time
Bachelor of Arts/Bachelor of Laws	Criminology	5y Full Time / ≤ 12y Part Time
Bachelor of Criminology	Criminal Justice, Justice and Indigenous People, Justice, Politics and Society, Policing and Corrections	3y Full Time / ≤ 10y Part Time
Bachelor of Criminology/Bachelor of Laws		5y Full Time / ≤ 12y Part Time
Bachelor of Science	Forensic Science	3y Full Time / ≤ 10y Part Time
Bachelor of Science/Bachelor of Laws	Forensic Science	5y Full Time / ≤ 12y Part Time
Bachelor of Social Science	Criminology	3y Full Time / ≤ 10y Part Time

Economics and Agribusiness

UNDERGRADUATE		
Diploma in Business	Indigenous Organisation Management	1y Full Time / ≤ 4y Part Time
Bachelor of Agribusiness	Accounting, Economics, Finance, Marketing and Management, Rural Science, Technology and Data Analytics	3y Full Time / ≤ 10y Part Time
Bachelor of Agricultural and Resource Economics		4y Full Time / ≤ 10y Part Time
Bachelor of Agriculture/Bachelor of Business	Accounting, Agribusiness, International Business, Marketing	4y Full Time / ≤ 10y Part Time
Bachelor of Business Australian Defence Force personnel may be eligible for 16 units of advanced standing [†]	Accounting, Agribusiness, Analytics and Informatics, Business Analytics, Economics, Finance, Human Resource Management, International Business, Management, Marketing	3y Full Time / ≤ 10y Part Time
Bachelor of Business/Bachelor of Economics	See Bachelor of Business and Bachelor of Economics for available majors.	4y Full Time / ≤ 10y Part Time
Bachelor of Economics	Applied Econometrics, Economics, Economic Development, Environmental Analysis and Policy	3y Full Time / ≤ 10y Part Time
Bachelor of Economics/Bachelor of Laws	See Bachelor of Economics for available majors.	5y Full Time / ≤ 12y Part Time

[†]Two years (16 units) of advanced standing granted on successful admission. See page 25.

POSTGRADUATE		
Graduate Certificate in Agribusiness		0.5y Full Time / ≤ 2y Part Time
Graduate Diploma in Economics	Agricultural and Resource Economics,	1y Full Time / ≤ 4y Part Time
Master of Economic and Regional Development	Asian Studies, Humanities and Community Development, Rural Development, Urban and Regional Development	≤ 2y Full Time [#] / ≤ 6y Part Time
Master of Economics	Agricultural and Resource Economics, Economics, Economic Development, Efficiency and Productivity Analysis,	≤ 2y Full Time [#] / ≤ 6y Part Time

[#]Depending on entry pathway into course.

Course Name	Majors Available	Duration
Education and Teaching		
UNDERGRADUATE		
Bachelor of Education (Early Childhood Teaching)*		2.5y Full Time [#] / ≤ 8y Part Time
Bachelor of Education (Early Childhood and Primary)^†		≤ 4 y Full Time [†] / ≤ 10y Part Time
Bachelor of Education (K-6 Teaching)^		4y Full Time / ≤ 10y Part Time
Bachelor of Education (K-12 Teaching)^†		4y Full Time / ≤ 10y Part Time
Bachelor of Education (Secondary Arts)^		4y Full Time / ≤ 10y Part Time
Bachelor of Education (Secondary Mathematics)^		4y Full Time / ≤ 10y Part Time
Bachelor of Education (Secondary Music)~^		4y Full Time / ≤ 10y Part Time
Bachelor of Education (Secondary Science)^		4y Full Time / ≤ 10y Part Time
Bachelor of Education (In-service Conversion)*		1.5y Full Time / ≤ 6y Part Time
Bachelor of Educational Studies		3y Full Time / ≤ 10y Part Time
Bachelor of Organisational Leadership* Australian Defence Force personnel may be eligible for 16 units of advanced standing [†]		1y Full Time / ≤ 4y Part Time
Bachelor of Special and Inclusive Education (Primary)^		4y Full Time / ≤ 10y Part Time
Bachelor of Training and Development* Australian Defence Force personnel may be eligible for 16 units of advanced standing [†]		≤ 4y Part Time

[#]Depending on entry pathway into degree. ^{*}Alternative entry requirements apply. See [my.une.edu.au/courses](#) [~]This course requires a Music Audition as part of the entry requirements. For more information visit [une.edu.au/music-audition](#) [†]Two years (16 units) of advanced standing granted on successful admission. See page 25.

[^]**PERSONAL STATEMENT REQUIREMENTS**

From 2018, the Australian Government has introduced additional standards for admission to Initial Teacher Education (ITE) degrees. In addition to academic capability, applicants will also need to submit a ‘Personal Statement’ outlining their non-academic abilities. These non-academic capabilities include an applicant’s interest in teaching, time management and problem-solving skills, and involvement in leadership, community and/or learning development activities (i.e. work experience, community work or volunteering, extra-curricular projects etc). For more information visit [une.edu.au/teachingreqs](#)

[†]**BAND 5 REQUIREMENTS**

In addition to standard entry requirements (ATAR or equivalent), entrants to these accredited undergraduate teaching degree will need ONE of the following:

- a minimum of three ‘Band 5’ HSC results, including one in English, or
- to complete at least a full year of discipline studies in another higher education award (ie Bachelor of Arts, Diploma in Science or Bachelor of Educational Studies), or
- to enter via an alternative pathway, as advised by UNE and approved by NESA.
- to complete bridging units equivalent to a minimum of three ‘Band 5’ HSC results, including English, as approved by NSW Education Standards Authority (NESA) before entry, or

POSTGRADUATE		
Graduate Certificate in Education Studies	Specialisations available: Teaching English to Speakers of Other Languages (TESOL)	0.5y Full Time / ≤ 2y Part Time
Graduate Certificate in eLearning		0.5y Full Time / ≤ 2y Part Time
Master of Education	Specialisations available: eLearning, Indigenous Australian Education, Special Education, Teaching English to Speakers of Other Languages (TESOL)	≤ 1.5y Full Time [#] / ≤ 6y Part Time
Master of Teaching (Primary)		2y Full Time / ≤ 6y Part Time
Master of Teaching (Secondary)		2y Full Time / ≤ 6y Part Time

[#]Depending on entry pathway into course.

English, Writing, Media and Communications

UNDERGRADUATE		
Diploma in Professional Communication		≤ 4y Part Time
Bachelor of Arts	English, Screen and Media Studies, Writing	3y Full Time / ≤ 10y Part Time
Bachelor of Media and Communications	Media and Culture, Writing and Publishing	3y Full Time / ≤ 10y Part Time
POSTGRADUATE		
Master of Arts	English, Media and Communications, Writing	≤ 2y Full Time [#] / ≤ 6y Part Time

[#]Depending on entry pathway into course.

une.edu.au/teaching

une.edu.au/comms

Course Name	Majors Available	Duration
Environmental and Earth Sciences		
une.edu.au/environment		
UNDERGRADUATE		
Bachelor of Environmental Science	Conservation Ecology, Envirobusiness, Natural Resource Management, Remediation and Restoration	3y Full Time / ≤ 10y Part Time
Bachelor of Environmental Science/Bachelor of Laws		5y Full Time / ≤ 12y Part Time
Bachelor of GeoScience		3y Full Time / ≤ 10y Part Time
Bachelor of Science	Biodiversity, Botany, Genetics, Geoscience, Microbiology	3y Full Time / ≤ 10y Part Time
POSTGRADUATE		
Graduate Certificate in Environmental Science		≤ 1y Full Time# / ≤ 4y Part Time
Graduate Certificate in Planning and Management of Natural Hazards		≤ 2y Part Time
Graduate Diploma in Planning and Management of Natural Hazards		≤ 1y Full Time# / ≤ 4y Part Time
Master of Environmental Science and Management		≤ 2y Full Time# / ≤ 6y Part Time
Master of Planning and Management of Natural Hazards		1.5y Full Time / ≤ 6y Part Time

#Depending on entry pathway into course.

Exercise and Sports Science		
une.edu.au/sport		
UNDERGRADUATE		
Bachelor of Clinical Exercise Physiology	Accredited by Exercise and Sport Science Australia (ESSA)	4y Full Time / ≤ 10y Part Time
Bachelor of Exercise and Sports Science	Accredited by Exercise and Sport Science Australia (ESSA)	3y Full Time / ≤ 10y Part Time

Geography and Planning		
une.edu.au/geo		
UNDERGRADUATE		
Diploma in Town Planning		≤ 4y Part Time
Bachelor of Arts	Human Geography, Physical Geography	3y Full Time / ≤ 10y Part Time
Bachelor of GeoScience		3y Full Time / ≤ 10y Part Time
Bachelor of Science	Geography	3y Full Time / ≤ 10y Part Time
Bachelor of Social Science	Urban and Regional Studies	3y Full Time / ≤ 10y Part Time
Bachelor of Sustainability	Community Engagement and Development, Cultural Heritage Management, Environmental Governance, Environmental Resilience, Governance and Regulation	3y Full Time / ≤ 10y Part Time
Bachelor of Urban and Regional Planning		4y Full Time / ≤ 10y Part Time
POSTGRADUATE		
Graduate Diploma in Urban and Regional Planning		1.5y Full Time / ≤ 6y Part Time
Master of Arts	Environmental Advocacy, Geography, Regional Change Management**	≤ 2y Full Time# / ≤ 6y Part Time
Master of Urban and Regional Planning		1.5y Full Time / ≤ 6y Part Time

#Depending on entry pathway into course. **Not all majors are available for all candidates.

Languages, Linguistics and Cultural Studies		
une.edu.au/languages		
UNDERGRADUATE		
Diploma in Modern Languages	Chinese, Indonesian, French, Italian, German, Japanese, Spanish	≤ 4y Part Time
Bachelor of Arts	Chinese, Classical Languages, French, German, Indigenous Studies, Indonesian, Islamic Studies, Italian, Japanese, Lingusitics, Spanish, Studies in Religion	3y Full Time / ≤ 10y Part Time
Bachelor of International and Language Studies^	Languages	2y Full Time / ≤ 8y Part Time

Course Name	Majors Available	Duration
Bachelor of International Studies	Languages	3y Full Time / ≤ 10y Part Time
Bachelor of Languages^	Chinese, Indonesian, French, Italian, German, Japanese, Spanish	4y Full Time / ≤ 10y Part Time
Bachelor of Languages and International Business^	Chinese, French, German, Indonesian, Italian, Japanese, Spanish	4y Full Time / ≤ 10y Part Time
Bachelor of Social Science	Aboriginal Perspectives, Linguistics	3y Full Time / ≤ 10y Part Time
^Involves mandatory overseas language study.		
POSTGRADUATE		
Master of Applied Linguistics	TESOL	1.5y Full Time# / ≤ 6y Part Time
Master of Arts	Asian Studies, Chinese Studies, Classical World, French Studies, Indigenous Studies, Indonesian Studies, Italian Studies, Linguistics, Studies in Religion**	≤ 2y Full Time# / ≤ 6y Part Time

#Depending on entry pathway into course. **Not all majors are available for all candidates.

Law and Criminology		
une.edu.au/legal		
UNDERGRADUATE		
Diploma in Paralegal Studies		1y Full Time / ≤ 4y Part Time
Diploma in Prosecution and Advocacy		≤ 4y Part Time
Advanced Diploma in Paralegal Studies		1.5y Full Time / ≤ 6y Part Time
Bachelor of Agriculture/Bachelor of Laws		5y Full Time / ≤ 12y Part Time
Bachelor of Arts	Criminology	3y Full Time / ≤ 10y Part Time
Bachelor of Arts/Bachelor of Laws	Criminology	5y Full Time / ≤ 12y Part Time
Bachelor of Business/Bachelor of Laws	See Bachelor of Business for relevant majors	5y Full Time / ≤ 12y Part Time
Bachelor of Computer Science/Bachelor of Laws		5y Full Time / ≤ 12y Part Time
Bachelor of Criminology	Criminal Justice, Justice and Indigenous People, Justice Politics and Society, Policing and Corrections	3y Full Time / ≤ 10y Part Time
Bachelor of Criminology/Bachelor of Laws		5y Full Time / ≤ 12y Part Time
Bachelor of Economics/Bachelor of Laws	See Bachelor of Economics for relevant majors	5y Full Time / ≤ 12y Part Time
Bachelor of Environmental Science/Bachelor of Laws		5y Full Time / ≤ 12y Part Time
Bachelor of Laws (3 Years)		3y Full Time / ≤ 10y Part Time
Bachelor of Laws (4 Years)		4y Full Time / ≤ 10y Part Time
Bachelor of Legal Studies		3y Full Time / ≤ 10y Part Time
Bachelor of Science/Bachelor of Laws	See Bachelor of Science for majors	5y Full Time / ≤ 12y Part Time
Bachelor of Social Science	Criminology	3y Full Time / ≤ 10y Part Time
POSTGRADUATE		
Graduate Certificate in NDIS Business Development		≤ 2y Part Time
Master of Laws		≤ 2y Full Time# / ≤ 6y Part Time

#Depending on entry pathway into course.

Mathematics, Statistics, Chemistry and Physics		
une.edu.au/mathematics		
UNDERGRADUATE		
Bachelor of Computer Science	Data Science, Software Development	3y Full Time / ≤ 10y Part Time
Bachelor of Science	Applied Physics, Chemistry, Mathematics	3y Full Time / ≤ 10y Part Time
POSTGRADUATE		
Master of Scientific Studies	Chemistry, Mathematics, Medicinal Chemistry	2y Full Time / ≤ 6y Part Time

Course Name	Majors Available	Duration
Medicine* une.edu.au/medicine		
Bachelor of Medical Science and Doctor of Medicine** The Joint Medical Program (JMP) is a two stage five year program comprising of a Bachelor of Medical Science (stage one) and Doctor of Medicine (stage two), offered jointly in partnership by the University of New England and the University of Newcastle.	To apply you must complete the following three steps: 1. Register online to sit the UCAT (University Clinical Aptitude Test); and 2. Apply direct online to the Joint Medical Program; and 3. Apply through the Universities Admission Centre (NSW and ACT).	5y Full Time

*Please visit une.edu.au/jmp for additional entry requirements and admission process. **This course is on-campus only.

Nursing, Social Work and Health une.edu.au/healthnursing		
UNDERGRADUATE		
Diploma in Community Welfare and Wellbeing		1y Full Time / ≤ 4y Part Time
Bachelor of Community Services Accredited by the Australian Community Workers Association (ACWA)	Aboriginal Community Care, Aged Care, Children and Young People, Disability**	3y Full Time# / ≤ 6y Part Time
Bachelor of Nursing^		≤ 3y Full Time#^^ / ≤ 6y Part Time
Bachelor of Pharmacy with Honours		4y Full Time / ≤ 10y Part Time
Bachelor of Social Science	Health Management	3y Full Time / ≤ 10y Part Time
Bachelor of Social Work		4y Full Time / ≤ 10y Part Time

^Online students must participate in clinical experience and on-campus intensive schools throughout their degree. See une.edu.au/courses for details. #Depending on entry pathway into course. ^^Two year fast-track option available. **Not all majors are available for all candidates.

POSTGRADUATE		
Graduate Certificate in Disability		≤ 2y Part Time
Graduate Certificate in Health Management		0.5y Full Time / ≤ 2y Part Time
Graduate Certificate in Mental Health Practice		0.5y Full Time / ≤ 2y Part Time
Graduate Diploma in Counselling Accredited by the Australian Counselling Association (ACA)		≤ 4y Part Time
Graduate Diploma in Disability		≤ 4y Part Time
Graduate Diploma in Health Management		1y Full Time / ≤ 4y Part Time
Graduate Diploma in Mental Health Practice		≤ 1y Full Time# / ≤ 4y Part Time
Master of Counselling Accredited by the Australian Counselling Association (ACA)		≤ 6y Part Time
Master of Disability		≤ 6y Part Time
Master of Health Management	Quality Management	≤ 1.5y Full Time# / ≤ 5y Part Time
Master of Mental Health Practice		≤ 1.5y Full Time# / ≤ 6y Part Time
Master of Neuroscience		2y Full Time / ≤ 6y Part Time
Master of Social Work (Professional Qualifying)		2y Full Time / ≤ 6y Part Time

#Depending on entry pathway into course.

Peace, Political and International Studies une.edu.au/peace		
UNDERGRADUATE		
Bachelor of Arts	Peace Studies, Political and International Studies	3y Full Time / ≤ 10y Part Time
Bachelor of International Studies	Global Politics and Peace, Languages, Societies	3y Full Time / ≤ 10y Part Time
Bachelor of Social Science	Peace and Development Studies, Political and International Studies	3y Full Time / ≤ 10y Part Time
POSTGRADUATE		
Master of Arts	Environmental Advocacy, Peace Studies, Political and International Studies**	≤ 2y Full Time# / ≤ 6y Part Time

**Not all majors are available for all candidates. #Depending on entry pathway into course.

Course Name	Majors Available	Duration
Pharmacy, Biology and Biomedical Science une.edu.au/biosciences		
UNDERGRADUATE		
Bachelor of Biomedical Science		3y Full Time / ≤ 10y Part Time
Bachelor of Pharmacy with Honours		4y Full Time / ≤ 10y Part Time
Bachelor of Science	Biochemistry/Biotechnology, Biodiversity, Microbiology, Palaeobiology, Physiology	3y Full Time / ≤ 10y Part Time

Psychology, Sociology and Social Science une.edu.au/psych		
UNDERGRADUATE		
Bachelor of Arts	Psychology, Sociology	3y Full Time / ≤ 10y Part Time
Bachelor of Psychological Science	Counselling	3y Full Time# / ≤ 10y Part Time
Bachelor of Psychology with Honours		4y Full Time# / ≤ 10y Part Time
Bachelor of Science	Psychology, Neuroscience	3y Full Time / ≤ 10y Part Time
Bachelor of Social Science	Aboriginal Perspectives, Criminology, Health Management, Linguistics, Organisational Management, Peace and Developmental Studies, Political and International Studies, Psychology, Social Philosophy, Sociology, Urban and Regional Studies	3y Full Time / ≤ 10y Part Time

#Depending on entry pathway into course.

POSTGRADUATE	
Graduate Diploma in Psychology	1.5y Full Time / ≤ 5y Part Time
Graduate Diploma in Psychology (Advanced)##	≤ 2y Part Time
Master of Neuroscience	2y Full Time / 6y Part Time
Master of Professional Psychology##	1y Full Time / ≤ 4y Part Time
Master of Psychology (Clinical)##	2y Full Time / ≤ 6y Part Time

##Early Application closing date and additional admission criteria. Please check my.une.edu.au for details.

Science une.edu.au/science		
UNDERGRADUATE		
Diploma in Science	Approved Programs: General Studies in Science, Medical Sciences Program	1y Full Time / ≤ 4y Part Time
Bachelor of Science	Animal Science and Veterinary Studies, Applied Physics, Archaeology, Biochemistry/Biotechnology, Biodiversity, Botany, Chemistry, Computational Science, Forensic Science, Genetics, Geography, Geoscience, Mathematics, Medicinal Chemistry, Microbiology, Neuroscience, Palaeobiology, Physiology, Psychology, Zoology	3y Full Time / ≤ 10y Part Time
Bachelor of Scientific Studies^^		3y Full Time / ≤ 6y Part Time
Bachelor of Arts/Bachelor of Science	See Bachelor of Science (and Bachelor of Arts) for available majors.	4y Full Time / ≤ 10y Part Time
Bachelor of Science/Bachelor of Laws	See Bachelor of Science for majors	5y Full Time / ≤ 12y Part Time

^^See une.edu.au/science-pathways for details.

POSTGRADUATE		
Graduate Certificate in Science	Biochemistry, Biodiversity Science, Biomedical Science, Chemistry, Genetics, Mathematics, Neuroscience, Physical Sciences, Research Methods, Regulatory Science, Statistics, Zoology	0.5y Full Time / ≤ 2y Part Time
Graduate Diploma in Science	Applied Statistics, Biochemistry, Biodiversity Science, Biomedical Science, Chemistry, Computational Data Science, Genetics, Health, Mathematics, Medicinal Chemistry, Neuroscience, Physical Sciences, Quantitative Ecology, Regulatory Science, Zoology	1y Full Time / ≤ 4y Part Time
Master of Scientific Studies	Biochemistry, Biodiversity Science, Biomedical Science, Chemistry, Genetics, Mathematics, Medicinal Chemistry, Quantitative Ecology, Zoology	2y Full Time / ≤ 6y Part Time

Course Name	Majors Available	Duration
Sustainability		une.edu.au/sustainability
UNDERGRADUATE		
Bachelor of Environmental Science	Conservation Ecology, Envirobusiness, Natural Resources Management, Remediation and Restoration	3y Full Time / ≤ 10y Part Time
Bachelor of Environmental Science/Bachelor of Laws		5y Full Time / ≤ 12y Part Time
Bachelor of Social Science	Urban and Regional Studies	3y Full Time / ≤ 10y Part Time
Bachelor of Sustainability	Community Engagement and Development, Cultural Heritage Management, Environmental Governance, Environmental Resilience, Governance and Regulation	3y Full Time / ≤ 10y Part Time
Theatre, Performance and Music		une.edu.au/musictheatre
UNDERGRADUATE		
Diploma in Music†~		≤ 4y Part Time
Diploma in Music Technology		≤ 4y Part Time
Bachelor of Arts	Music, Theatre and Performance	3y Full Time / ≤ 10y Part Time
Bachelor of Education (Secondary Arts)**	Drama	≤ 4y Full Time / ≤ 10y Part Time
Bachelor of Education (Secondary Music)**†~		4y Full Time / ≤ 10y Part Time
Bachelor of Music†~		3y Full Time / ≤ 10y Part Time
†Early closing date. See une.edu.au/courses ~ This course requires a Music Audition as part of the entry requirements. For more information visit une.edu.au/music-audition **Additional entry requirements apply. See Education and Teaching page 18.		
POSTGRADUATE		
Master of Applied Theatre Studies		1y Full Time / ≤ 4y Part Time
Master of Arts	Music, Theatre and Performance.	≤ 2y Full Time* / ≤ 6y Part Time
*Depending on entry pathway into course.		

Key Dates

2 March 2020
Trimester 1 commences

8 May 2020
Open Day

29 June 2020
Trimester 2 commences

September 2020
Scholarship Applications open*

26 October 2020
Trimester 3 commences

1 March 2021
Trimester 1 commences

*Subject to change

Contact us

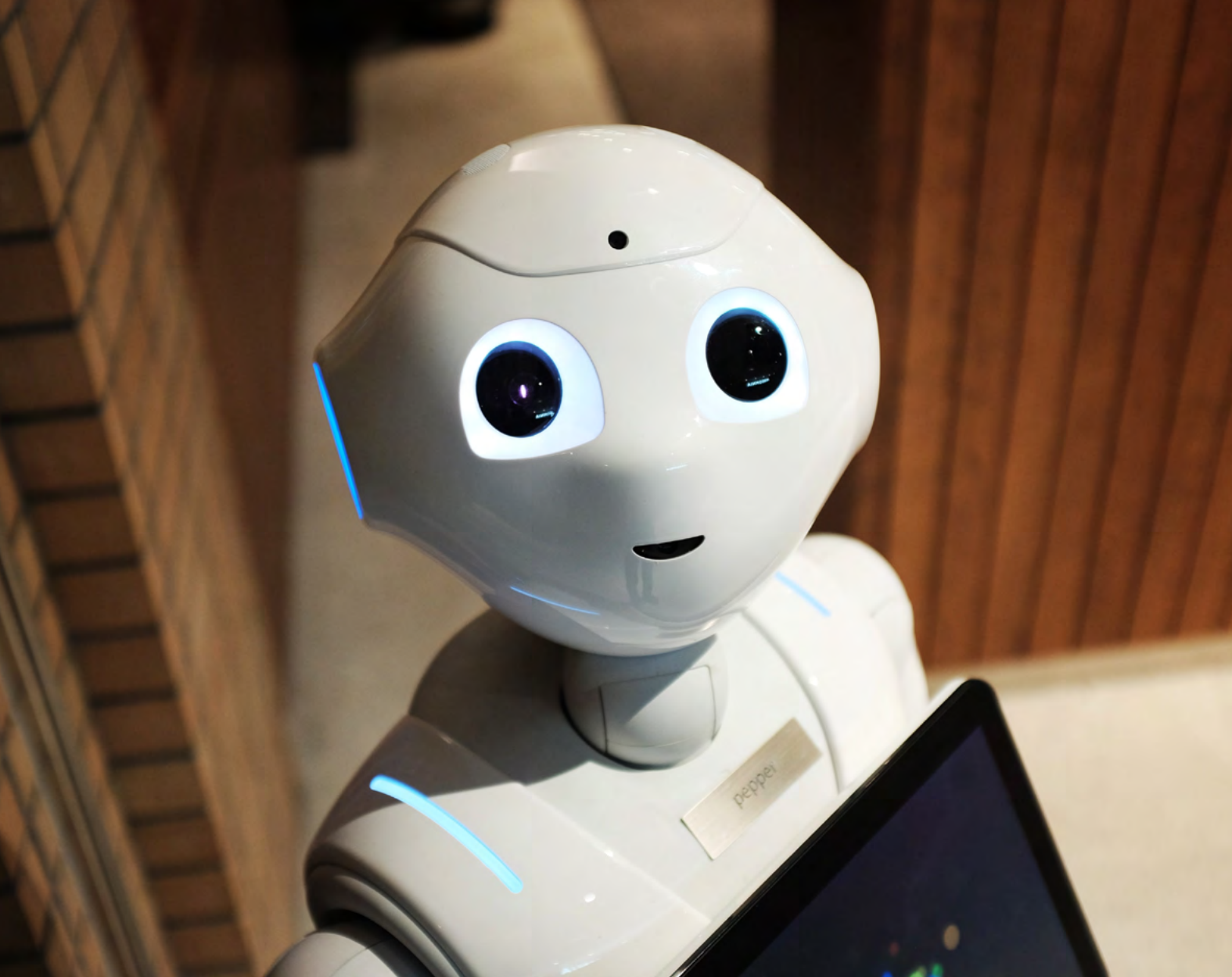
Contact UNE Future Students Team on **1800 818 865** or via our **online chat service**, or make an enquiry 24/7 at **study.une.edu.au**

Follow us



@UniNewEngland





Moving Up or Moving On?

With the flexibility of our online degrees and experience with defence, UNE will help you to adapt to a rapidly changing workplace.



How secure is your career?

Experts predict 50% of jobs will be lost by 2030. Discover how exposed you are with UNE's free Future of Work Predictor. Your report is based on latest economic data and tells you:

1. How your job will change overall
2. How your job tasks will change
3. How your qualifications compare, and
4. How wages and employment in your job will change

Get Your Free Report une.edu.au/predictor

Balancing study with life in the military requires a university that understands the unique needs of defence personnel.

Whether you're preparing for promotion or a switch to civilian life, UNE has been working with defence personnel for more than 70 years. In fact we invented university distance education for defence personnel returning from World War II, and we've been perfecting it ever since.

The flexibility of our online degrees, and deep understanding of the demands that come with life in the armed forces, allows you to stay on track, even through transfers and deployments.

Ability to fast track your degree

UNE values and recognises your experience and training in the ADF which may give you advanced standing into UNE courses through recognition of prior learning (RPL*).

Successful entry into the *Bachelor of Business*, *Bachelor of Organisational Leadership* or *Bachelor of Training and Development* **guarantees you will receive 16 units of advanced standing, enabling you to complete your degree in one year with only eight units of study.**

To find out more, or to see all the courses on offer, visit une.edu.au/defence, or talk with our team about your situation and objectives.

*Your RPL will be assessed prior to admission being granted.



Find out more
call 1800 818 865
or visit une.edu.au/defence





Get qualified for university entry at home, for free

If you have ever considered university study and thought it was out of your reach, it's time to think again.

UNE's Pathways Enabling Course has been specially designed for adults, like you, without the educational background for undergraduate admission.

The Pathways Enabling Course prepares you for admission to an undergraduate course at UNE. It is free from course fees, available online and provides students with access to tutoring and mentoring support at all stages.

Successful completion of UNE's Pathways Enabling Course provides you with the minimum entry requirements to most of our undergraduate courses. We can even give you course credit to help you fast-track your degree.

Why study the Pathways Enabling Course at UNE?

- Prepare for university without paying course fees
- Gain admission to university
- Develop valuable skills and knowledge
- Enjoy flexible online study - benefit from over 60 years of excellence in flexible study
- Complete study that can count towards your degree
- Start in any of UNE's three teaching periods

For more information or to apply visit
une.edu.au/ofcourse or call 1800 818 865