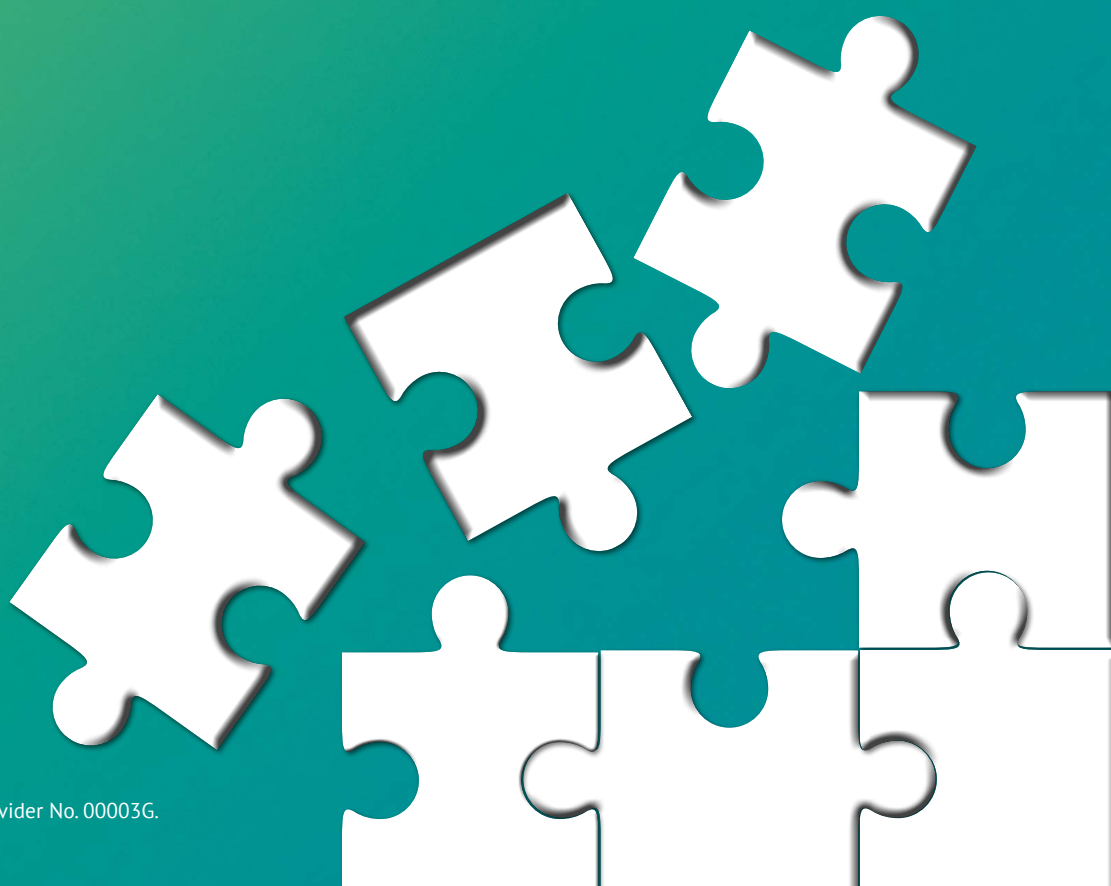


**une**

University of  
New England

# Bespoke Graduate Certificate Professional Practice

## Fact Sheet



# UNE's new Bespoke Graduate Certificate gives you freedom to design your own course, have your work experience recognised and defer your fees

## Less Effort Without Cutting Corners

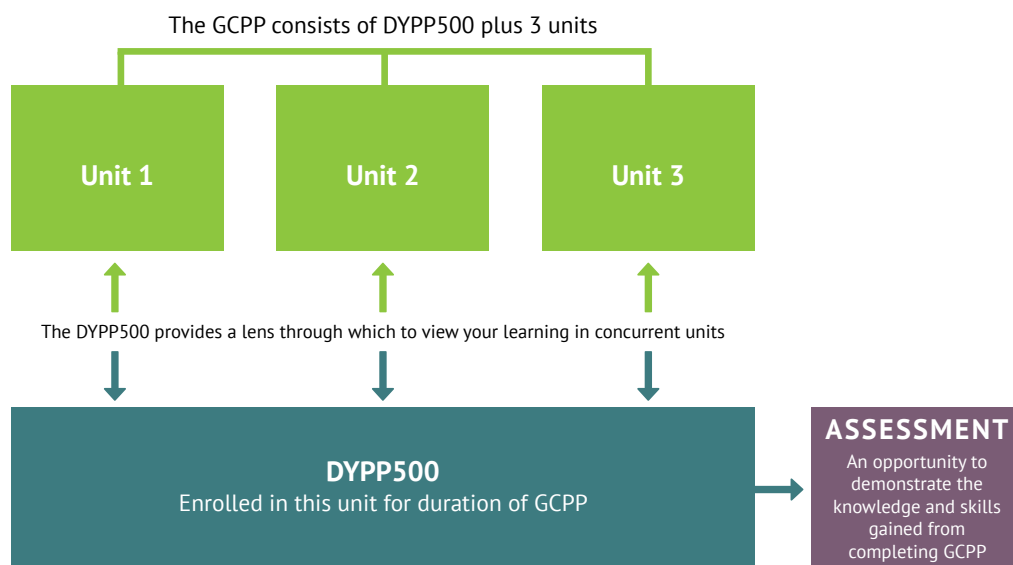
UNE has developed a genuinely, innovative process that allows you to complete the Bespoke Graduate Certificate of Professional Practice with less effort, and with more career benefits, than a standard graduate certificate. There are no tricks or gimmicks. You won't be expected to cram or compress weeks of learning into shorter intensive bursts which only give the illusion of less effort.

Compared to a standard graduate certificate, the amount of effort required is reduced because 25 to 50% of the course is devoted to collaborating with your academic success advisor, to articulate and demonstrate the knowledge you have already gained in your professional life. This process occurs within the core unit, '*Developing Your Professional Practice*' (DYPP). The DYPP saves you effort because you are building on and enriching your existing knowledge without having to learn all of the subject matter from scratch.

## Design Exactly the Course You Need

The Graduate Certificate of Professional Practice is a truly Bespoke Course in which you control the subject matter you study. The course is made up of four units consisting of a core unit known as '*Developing Your Professional Practice*' (DYPP) worth one or two units plus two or three elective subjects.

## How the Graduate Certificate Professional Practice (GCPP) works at a glance



## The Core Unit - 'Developing Your Professional Practice' (DYPP)

The DYPP unit makes up 25 or 50% of the course, depending on your priorities and how you choose to structure your course. Within this unit, you customise your learning experience. You choose your topics as part of your Negotiated Learning Plan with your academic success advisor prior to commencing your studies. You may engage with some or all of the topics available.

Topics in the DYPP Unit include the following:



You select different levels of learning within each topic. The assessment tasks are unique being fully flexible and you negotiate the weighting for each. This allows you to choose the assessment tasks that reflect what is best suited to who you are and what you are aiming to achieve. You can also work at your own pace.

## Freedom to Choose 2 or 3 Elective Units from over 1,000 units

In addition to the DYPP Core Unit, you choose 2 or 3 units to make up the rest of your course. You have complete freedom to select these units from over 1,000 units. Choose these from one discipline or mix and match units from across different disciplines. While the choice is completely yours, your academic success advisor can help guide you to select those units. This lets you study only those units which give you the knowledge and skills you need, without having to study the ones that don't. This empowers you to be able to adapt, as quickly and efficiently as possible, to a rapidly changing workplace.

## A unique Academic Concierge to guide and support you all the way

Your individual circumstances are unique, so an academic success adviser, who is also a qualified careers advisor, will provide you with one-to-one guidance all the way through your studies. It all begins with a conversation even before you have started. What do you want to achieve from your studies? What do you need to achieve your objectives? Your academic success adviser can help you identify and articulate your plans and goals and then help you select units that provide you with the specific subject knowledge and skills you're looking for.



## When you graduate you will have:

- A postgraduate degree compliant with the Australian Quality Framework (AQF),
- Gained formal academic recognition for the knowledge gained in your professional life,
- A compelling professional portfolio you can use to articulate your capabilities to future employers, and
- Gained the specific additional knowledge you have identified needed to protect your career in a rapidly changing workplace.

## Defer Fees

The course is eligible for the government's FEE-HELP scheme which allows you to defer fees.

## Online Study with 24x7 support

Study online in any of our three study periods (trimesters) with 24/7 tutor support. Finish in one trimester, or take three.

## If life gets busy and you can't finish

If life gets too busy for you during your course and you aren't able to complete, you can exit with a 2 or 3 unit Bespoke Course, with a University Certificate of Completion to show for your effort.

## Career Opportunities

Being a highly tailored course, the career opportunities are very specific to each individual. Depending on your career aspirations, the award may help to:

- diversify skillsets to prepare for a rapidly changing workplace
- hone specialist skills to give a competitive edge in a chosen field or
- provide new skills to take your career in a new direction.

## Entry Requirements:

A candidate shall:

- (a) hold an AQF Level 7 Bachelor degree in any discipline; or
- (b) satisfy the School by means of other relevant qualifications and workplace experience, at least equivalent to admission rule (a), of adequate preparation for candidature.