

**Only one online University
has been awarded the
maximum 5 stars for
Overall Satisfaction,
every year for 12 years***



Flexible Study Guide

une
University of
New England

Study with UNE online and see why UNE gets the maximum 5-star rating from graduates for Overall Satisfaction and Teaching Quality year after year.*

UNE has been helping adults study from home longer than any other Australian university and our students say we're the best at it. That's what you would expect from a university with over 60 years of experience in distance education.

Flexibility

Study online across three study periods with 24/7 online tutor support. If you don't have entry qualifications, our free Pathways Enabling Course gives you entry and credit to most of UNE's undergraduate degrees.

UNE has a campus in Armidale and study centres in Parramatta, Taree, Tamworth and several locations throughout regional NSW.

Bespoke Courses

If you're not ready to commit to a whole degree right now, we also have our revolutionary new Bespoke Courses where you can design a short course of just 2, 3 or 4 units. Because they're real degree units you may get credit towards a full degree later. (See page 14).

Contents

Study Online	4
What is a Degree?	6-7
Pathways to Study	8-9
Cost to Study	10-11
How To Apply	12
Support at UNE	13
Bespoke Courses	14
Key Dates	15
MyFuture Finder	15

* The Good Universities Guide Ratings for 2007–2018. The Good Universities Guide provides the only independent performance ratings of Australian undergraduate courses and their providers.





180⁺

Courses available

Study Online



Studying online

UNE has over 60 years of experience in distance education, now online study.

We know that a vital part of your success is your easy access to resources and to the rest of the online learning community, including your classmates, academic staff and support staff.

Online study means that it can take place whenever it suits you.

24/7

Study is available online across three study periods with 24/7 online tutor support (see page 13).

How does online study work?

Instead of turning up to a lecture on campus at a designated time, the course content is provided online for you to access each week when it suits you. It might be a podcast (recorded lecture), a set of readings, questions posed in a discussion board, an online quiz or a video. Your lecturer will guide you through the unit with a weekly plan of study and will regularly check in on the discussion boards or forums. There are various ways you can communicate with teaching staff and other students.

To make sure your learning can take place when it suits you, UNE provides online facilities that allow you to send questions, submit assignments, order library books, check your results and access other resources, 24 hours a day, seven days a week. UNE also has exam centres in all major cities and many regional areas across Australia, so you don't have to travel far to sit your exams.

Online community

We also believe that a vital part of online study is your engagement with the learning community. Communication with your classmates, teaching staff and university support staff will enhance your study experience and ensure that your skills extend beyond just the subject matter.

5
★★★★★

Awarded 5 stars **Overall Experience** - Good Universities Guide 2018



Intensive schools

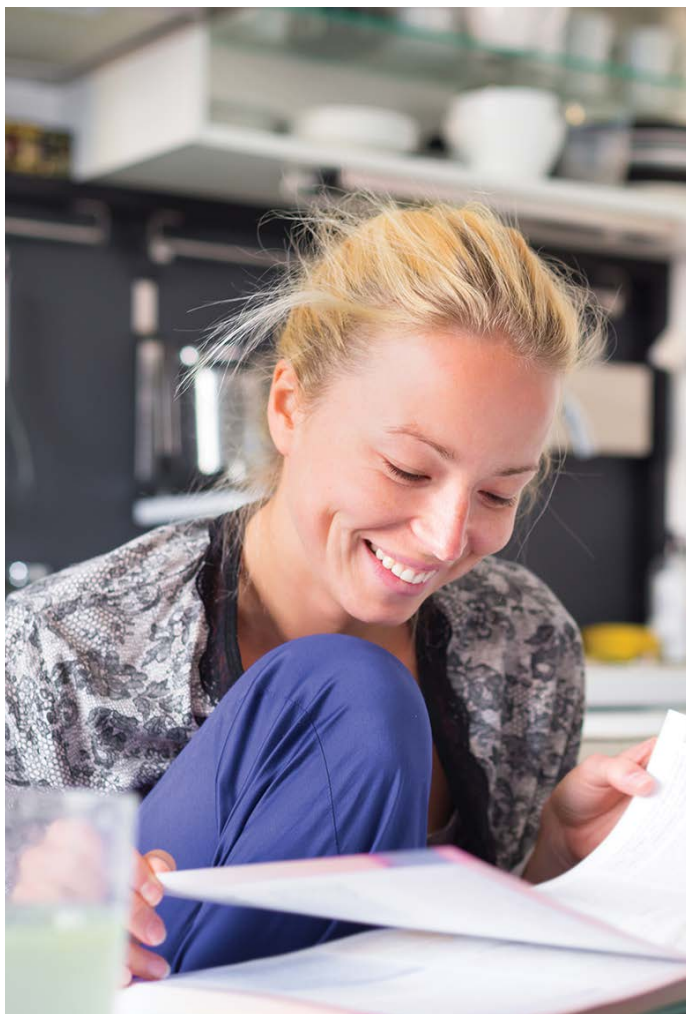
Some online units have intensive schools (sometimes known as residential schools). They enable students to engage in practical exercises and classes that are designed to achieve specific learning outcomes. Intensive schools are a valuable and enjoyable experience that enrich the learning process and help build your networks.

i See une.edu.au/courses to find out which units have intensive schools.

Accommodation at UNE

Whether you need short term accommodation as part of your online study program, or you want to immerse yourself in the college lifestyle throughout your degree, UNE has a range of stress-free and affordable accommodation solutions to suit your needs, including modern apartments complete with your own kitchen and bathroom facilities.

i For more information visit une.edu.au/living



What is a Degree?

Undergraduate degrees

An undergraduate degree (eg Bachelor) is the award you receive once you have completed your course of study. It is where most first-time university students commence their tertiary studies. To obtain your degree you must complete a specified number and combination of units. Most undergraduate degrees can be completed in 3-5 years of full-time study or 6-10 years part-time.

The components of your degree

Your course is made up of a series of units. In most cases, degrees have compulsory units, referred to as 'core' units, as well as a selection from a specified range of units. In some degrees, you may also select units from a range of disciplines; these are referred to as 'elective' units.

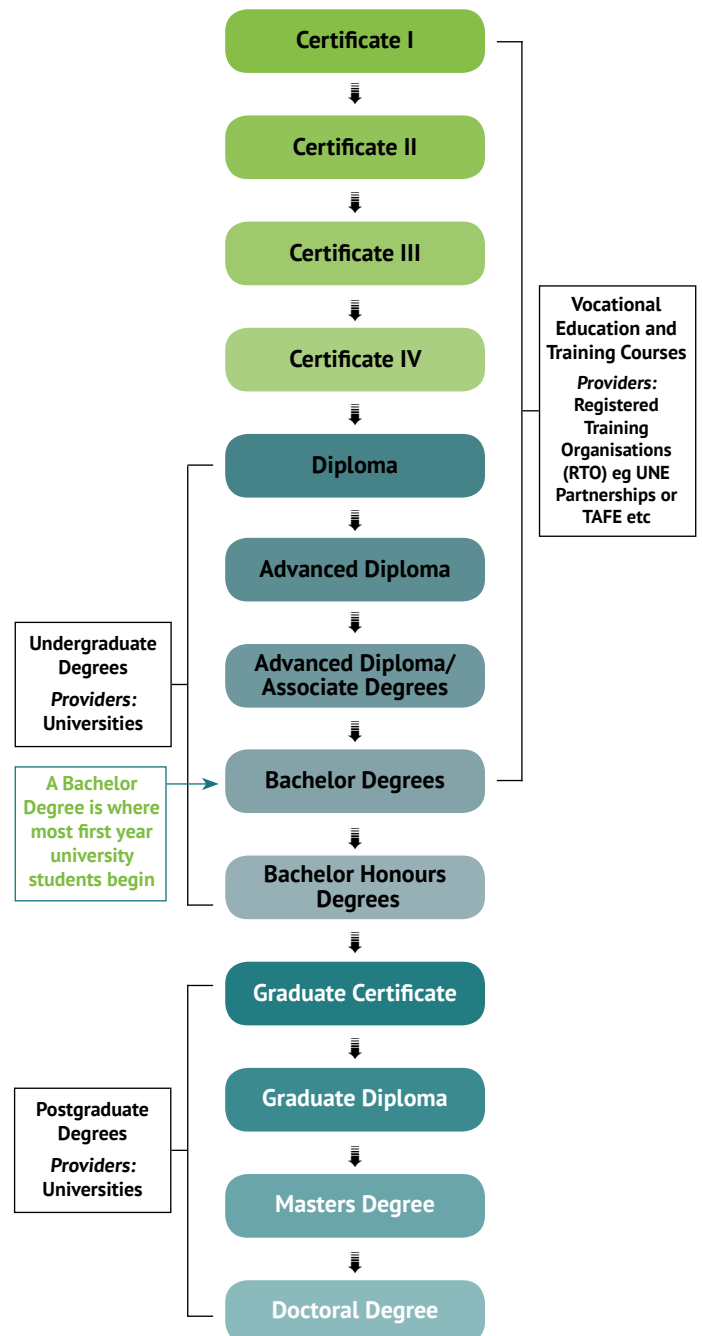
A unit is generally equal to 6 credit points (you will see this written as 6cp). Units that cover two trimesters are generally equal to 12 credit points.

A number of degrees include majors, which can be considered as in depth study in a specific area or discipline.

Qualification progression

The diagram opposite shows the progression of qualifications as per the Australian Qualifications Framework (AQF). You do not need to follow the AQF levels in a linear fashion. There are many different ways to progress, including exit and entry points in some qualifications. How you progress depends on the qualifications and experience you already have and qualifications you wish to obtain.

i To learn more about the Australian Qualification Framework visit aqf.edu.au



Postgraduate degrees

Postgraduate programs are generally for people who have already successfully completed an undergraduate degree and/ or who have significant industry experience. Postgraduate courses can be undertaken by either coursework or by research.

There are many reasons why you might undertake postgraduate study: to progress in your career, to change careers entirely or for personal fulfilment. Whatever your reason, UNE has a wide range of postgraduate degrees available, and our flexible approach to study means you don't have to stop working or even leave home to study.

Postgraduate coursework degrees

Postgraduate coursework degrees include Graduate Certificates, Graduate Diplomas and Masters. Particular Masters degrees have Graduate Certificates and Graduate Diplomas as entry points. Alternatively, some Masters degrees offer an exit pathway in the form of a Graduate Certificate or Graduate Diploma. You will need to visit my.une.edu.au/courses for relevant information, because each postgraduate qualification has unique requirements and rules.

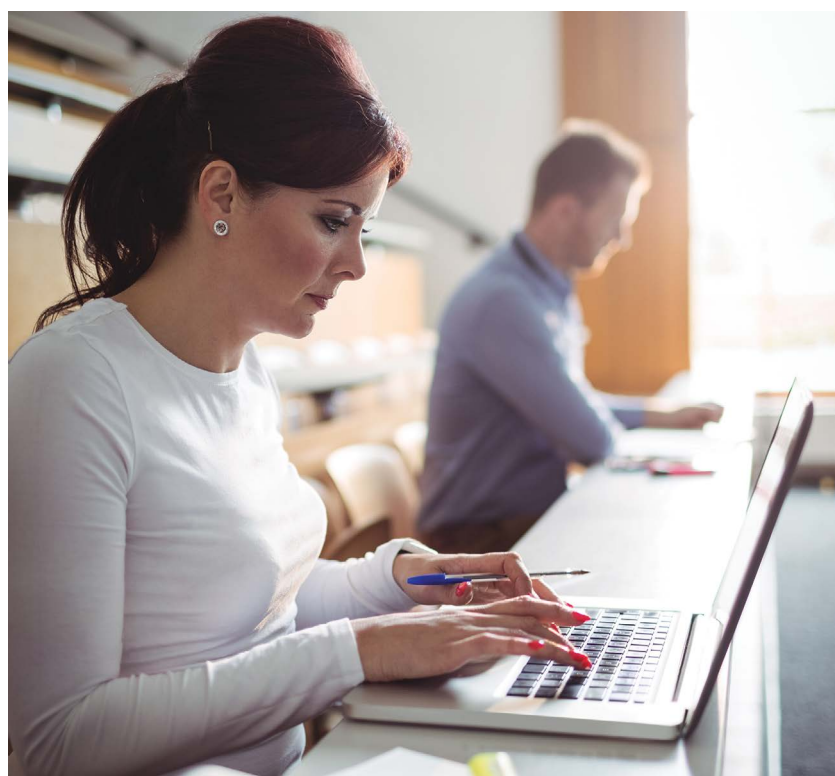
Postgraduate research degrees

This is your chance to shine, to study what you are passionate about, and make an original contribution to research in your field.

A postgraduate research degree can be either at masters level, which is usually of 2 years duration, or at doctorate level which is of 3-4 years duration. Doctorates are the highest level of academic achievement, where you will develop advanced skills in research, critical thinking and problem solving.

UNE's staff and students make a significant contribution to research across a diverse range of areas. We are renowned for providing high-quality research training both domestically and internationally.

i For more information about UNE's research opportunities visit une.edu.au/research



What should you study?

Things to consider when deciding what to study include:

Your areas of interest - students always do better when they are studying something that is of interest to them.

Career goals - are you seeking:

- professional qualifications to progress in your career.
- to change careers, or;
- personal enrichment or fulfilment?

Other considerations

- What current qualifications/work experience do you have?
- Would you like to study full-time or part-time?
- When would you like to commence?
- If considering postgraduate study, would you like to complete a qualification by coursework or by research?

Browse & explore

Once you have answered the questions above, start browsing the different study areas in this brochure, or online at my.une.edu.au/courses. This will help you to get a general feel for what you will learn and how particular qualifications will assist you in achieving your goals.

You will also find details about all of the courses available at UNE, including a course overview and rules, duration, study options and entry requirements.

Pathways to Study



Entry Pathways

If it's been a while since you last studied or if you don't have entry qualifications, UNE offers a range of pathways to help get you on your way, such as the Pathways Enabling Course.

Pathways Enabling Course*

The Pathways Enabling Course is a program of study for students without the educational background for admission to an undergraduate degree at UNE.

Pathways Enabling is studied fully online, has no tuition fees and will give you entry to most UNE degrees.

You'll receive mentoring and additional tutorial support through two foundation units, which provide you with the skills and confidence required for successful undergraduate study. You then choose from a range of academic units, making sure they are part of the degree you want to enrol in later. On successful completion of these units they will be credited towards your degree – so when you start your degree, you'll already be two units ahead!

i For more information visit une.edu.au/enabling

Science Pathways

Want to study Science at UNE but don't have the background? Follow Science Pathways.

The Science Pathways program, in the Bachelor of Scientific Studies, is designed for students who may have little or no scientific background. It aims to build the skills and knowledge that will allow students to be accepted into other, more specialised science-based degrees. The Science Pathways program includes foundation units in basic sciences to get you up to speed. In addition, the program lets you choose units from a range of specific study pathways. On completion of the Science Pathways program you can transfer into the science degree of your choice, with credit for units already completed.

i For more information visit une.edu.au/science-pathways

Mature Age Special Entry

UNE provides for "Mature Age Special Entry" as an alternative entry pathway for undergraduate applicants without educational qualifications such as an ATAR or equivalent. As an applicant, you have the opportunity to make your case for studying at UNE based on your motivation, commitment and aptitude. Your supporting case should explain how your education, work and life experiences demonstrate that you have competencies relevant to your intended university studies.

i For more information visit une.edu.au/pathways

* Eligible domestic students are exempt from the student contribution amount for HECS and the Student Services and Amenities Fee (SSAF).

Foundation units

Some degrees at UNE have “assumed knowledge” or “recommended study” requirements for mathematics, chemistry or physics. If you don’t meet these recommendations or don’t feel confident with your knowledge, UNE offers a range of foundation units, to ensure you get the basics right. Some units are offered within degrees, so you can complete these units as part of your study. Other units are offered as short foundation courses prior to the commencement of trimester.

i For more information visit une.edu.au/foundation

Credit for previous study

Your prior study at university, TAFE or private educational providers may give you advanced standing or credit towards your degree. This will reduce the amount of time you need to study.

i For more information visit une.edu.au/advanced-standing

TRACKS Tertiary Preparation Program^{*~}

TRACKS is a tertiary preparation course for Aboriginal and Torres Strait Islander students who would like to develop academic skills and knowledge to undertake undergraduate studies at UNE. You will be part of a community of Aboriginal and Torres Strait Islander students who share your goals and interests. During the course you will build confidence and academic skills through flexible learning. You will also take an undergraduate unit in your area of interest that may count towards your UNE degree. On successful completion of the TRACKS course you will be eligible to apply for UNE undergraduate study.

i For more information visit une.edu.au/oorala

Special Tertiary Admissions Test (STAT)

The Special Tertiary Admissions Test (STAT) is a series of related tests designed to assess a range of competencies that are considered important for success in tertiary study. STAT assesses your ability to understand the material given and to think critically about issues, rather than to test knowledge of curriculum or a specific academic subject. STAT is conducted by the University Admissions Centre (UAC).

i For more information visit www.uac.edu.au/stat/

VET pathways

The University has agreements with several training organisations that recognise prerequisite qualifications and advanced standing for university courses. These include UNE Partnerships, TAFE, the Australian Agricultural Colleges Corporation, Tocal Agricultural College and the Australian Defence Force.

UNE Partnerships

UNE Partnerships is the Registered Training Organisation (RTO) of UNE, offering a range of vocational programs for career and professional development. Our qualifications provide alternative pathways into the University of New England. UNE Partnerships qualifications develop skills through workplace learning, ensuring new knowledge is directly relevant to the work environment. UNE Partnerships’ flexible approach to education allows you to organise study around your existing schedule.

i For more information call 1800 066 128 or visit unep.edu.au

UNE Partnerships Pathways to UNE



* Eligible domestic students are exempt from the student contribution amount for HECS and the Student Services and Amenities Fee (SSAF).

~ Please note the SSAF is applicable to students choosing to study the TRACKS program on campus. Eligible TRACKS students may apply for SA-HELP with regard to the SSAF.

Cost to Study

How much does it cost to study at UNE?

The amount you pay for a degree depends on a few things – whether you get a Commonwealth Supported Place (CSP) or a Full-Fee place, your residency and which cost ‘band’ the units of your degree fall within.

Undergraduate degrees

The majority of undergraduate courses at UNE have Commonwealth Supported Places (CSP) available**, which you can apply for provided you are an eligible domestic student and meet the residency requirements. This means that the government makes a contribution covering a part of the cost of your degree and you pay the difference between this contribution and the total cost of the degree.

i For more information visit studyassist.gov.au

Postgraduate degrees

Most postgraduate coursework degrees at UNE have both Commonwealth Supported Places (CSP) and Full Fee places available**. A Full Fee place means you pay for the cost of the course. The Full Fee amount you are required to pay will depend on the course or cluster your unit of study falls under. If you are admitted into a Full Fee course, you may be eligible for a Government loan called FEE-HELP.

i For more information visit studyassist.gov.au

Postgraduate research degrees

Students studying for a research degree may also be eligible for a Research Training Program (RTP) place. The Research Training Program provides an exemption from unit tuition fees.

i For more information visit une.edu.au/rtp

Student contribution bands for CSP

Within a CSP there are seven different ‘bands’ of costs, divided by discipline areas. Known as Student Contribution Bands, (see table below), they show the fees you will be charged per unit in each band, ie the difference between what the government contributes and the total cost of the fees.

The fees a student pays are calculated on an individual basis. This is due to the different bands and study loads a student undertakes each year and because the student contribution amounts change annually. For example, if you study a Bachelor of Arts, you might choose units in humanities, commerce and statistics. These units are all in different contribution bands and have different costs.

2018 Student contribution bands*^

Student contribution bands (charges per unit or 6 credit points)	CSP Rates
BAND 1: Arts, Humanities, Behavioural Science, Social Studies, Clinical Psychology, Foreign Languages, Visual and Performing Arts.	\$805.00
BAND 2: Computing, Built Environment, Allied Health, Other Health, Agriculture.	\$1148.00
BAND 3: Law, Dentistry, Medicine, Veterinary Science.	\$1344.00
BAND 4: Education, Nursing.	\$805.00
BAND 5: Accounting, Administration, Economics, Commerce.	\$1344.00
BAND 6: Mathematics, Statistics, Science.	\$1148.00
BAND 7: Engineering, Surveying.	\$1148.00

*Charges per 6 credit point (cp) unit. If the unit is 12 credit points then the cost above will be x 2.

^ Costs correct at time of printing. Some exceptions apply. For full details on how much you can expect to pay, visit: studyassist.gov.au

** Please note there is a limited number of Commonwealth Supported Places (CSP) available each year. CSP are subject to availability when you apply.

Payment options*

For Commonwealth Supported Places, you have several payment options open to you. If you are an Australian citizen you may:

- pay the total unit cost up front; or
- defer the payment until after you graduate and start earning over the minimum income threshold (the minimum threshold for the 2017–2018 income year is \$55,874 - see HECS-HELP information below); or
- pay some of the amount up front and defer the rest.

HECS-HELP*

HECS-HELP is a loan program to help eligible Commonwealth supported students to pay their student contribution amounts. To be eligible for a HECS-HELP loan, you must be studying in a Commonwealth Supported Place and be an Australian citizen or permanent humanitarian visa holder. Eligible New Zealand Special Category Visa holders may also be eligible for HECS-HELP. Essentially, the HECS-HELP loan scheme lets you defer the payment of your student contribution until you reach the minimum income threshold (which is \$55,874 for the 2017-2018 income year).

i For more information visit studyassist.gov.au

FEE-HELP*

FEE-HELP is a loan for eligible domestic fee paying students. These places are not subsidised by the government and tuition fees are set by the approved providers. FEE-HELP is available at public universities as well as approved FEE-HELP providers. A loan fee of 25% is applied to FEE-HELP loans for undergraduate courses of study.

What's the difference between HECS-HELP and FEE-HELP?

HECS-HELP is only available to students who have a Commonwealth Supported Place (CSP) for their study**. A CSP is subsidised by the Government so that students only pay the Student Contribution Amount for their units of study. FEE-HELP is a loan for eligible students who have a Full-Fee place for their study.

HELP may be available for Australian citizens, permanent humanitarian visa holders and eligible New Zealand Special Category Visa holders.

Student Amenities Fee

The Student Services and Amenities Fee (SSAF) applies to students studying on campus. It is used to help cover the

cost of student services including sport and recreation, childcare, counselling, legal services, healthcare, housing and employment, as well as independent student representation structures. Please see the table below for indicative student amenities fees.

Eligible students will have the option of taking out a loan for the fee under the SA-HELP scheme. For more information visit studyassist.gov.au

Online students are exempt from paying this fee.

Student Amenities Fees (2018)

	On Campus ¹	
	Annual Rate	Trimester Rate
Full -Time ²	\$298	\$149
Part -Time	\$223	\$111.50

1 On campus is defined as a teaching period with any unit enrolment listed as on campus.

2 Full-Time is defined as 0.375 EFTSL or more in a teaching period across all enrolled courses.

Bespoke Course Fee

UNE's Bespoke Courses give you the freedom to choose and pay for only the parts of a degree you need (see page 41 for course details). The Bespoke courses are full fee courses. You pay for each unit at a time, when you commence that unit.

The cost for your first two units is \$2,900 each. If you decide to design a three or four unit Bespoke Course, the cost for the third and fourth units drops to \$2,500 each. UNE has collaborated with Regional Australia Bank to provide students with a competitive low interest finance option to help defer the unit fees.

For more information visit bespokecourses.com.au

Self-Education Tax Deductions[^]

If you are an Australian citizen you may be eligible for a self-education tax deduction.

Self-education expenses are deductible when the course you undertake leads to a formal qualification and meets the following conditions.

The course must have a sufficient connection to your current employment and:

- maintain or improve the specific skills or knowledge you require in your current employment, or
- result in, or is likely to result in, an increase in your income from your current employment.

What can you claim?

To find out what you can claim as self-education tax deductions check with your accountant or visit the Australian Taxation Office ato.gov.au

* Please note the payment options and HECS-HELP information are correct at the time of printing. For updates please visit: studyassist.gov.au

** Please note not all students eligible for CSPs are eligible for HELP.

[^] Source Australian Taxation Office www.ato.gov.au March 2018.

How to Apply

How you apply to study at UNE will generally depend on how you want to study with us, either online or on campus, and also whether you will be studying an Undergraduate or Postgraduate course.

How to Apply to UNE

If you are planning to study with UNE, you will need to follow the application process below. For more information visit une.edu.au/study

PREPARE

Check out the courses/entry requirements* and ATAR/OP.
my.une.edu.au/courses



APPLY

Go to **UNE** at une.edu.au/apply



OFFER

Wait to receive and accept your offer of admission.



ENROL

Enrol or defer your offer of admission for up to 1 year.

* If you have overseas qualifications and you are an Australian citizen or permanent resident please contact us for advice prior to applying. If you are an international student, visit: une.edu.au/international

Need more information?



Visit our website:
une.edu.au/apply



Ask a question 24/7 at:
une.edu.au/askune or chat Mon-Fri,
9am-4pm by clicking on 'Chat'



Call the Future Students Team on
1800 818 865



UNE Future Students

Support at UNE

How we support you at UNE

At UNE you get more than just a degree. The support we offer to our students is a big part of what makes UNE special. You don't get lost in the crowd.

Academic Skills Office

The Academic Skills Office (ASO) is UNE's learning support to help you to succeed and excel in your studies. The ASO will help you to study more effectively and improve your results.

i For more information visit une.edu.au/aso

Student Support Team

At UNE we want to be sure that you have as smooth a passage as possible through your degree.

Student Support Team services include

- career development
- counselling
- special needs support
- one-to-one support and troubleshooting

Staff are available to work with you throughout your time at UNE.

i For more information visit une.edu.au/student-assist

Library Services

The University Library provides access to a wide range of information in electronic form and houses a large collection of books, journals and audio-visual material in the Dixon Library and the Law Library. In addition, the Dixon Library hosts the Learning Commons where you will find computers, media rooms, a podcasting studio, group study rooms and rooms for problem-based learning. Many of the resources found within the libraries are available online so you can do your own research at home or on campus.

i For more information visit une.edu.au/library

Childcare

Yarm Gwanga provides long term (full day and sessional), intensive school and vacation care.

i For more information visit yarmgwangachildcare.com.au/

Oorala Aboriginal Centre

Oorala is the study and advisory support centre for Aboriginal and Torres Strait Islander students enrolled at the University of New England. From your very first visit to UNE, right throughout your studies until completion of your degree and graduation, Oorala is here to support you. Whether you are enrolled on campus or studying online, the Centre assists you with enquiries and referrals about courses, academic advice, accommodation, Abstudy, scholarships and cadetships. Oorala also offers tutoring through the Indigenous Tutorial Assistance Scheme (ITAS), computer and study facilities, and activities to engage with other students and the local Aboriginal community.

i For more information visit une.edu.au/oorala

24/7 Online Tutor Support

With 24/7 tutor support you can upload a draft assignment 24/7 and get detailed feedback in less than 24 hours. Academic literacy and assignment support is also available for essay and report writing, assignment research, referencing and citation and study skills. Online after hours support (3pm-12am) is available for foundation skills in maths, science and business studies as well as first year accounting, economics and statistics. UNE also offers many academic skills workshops via video conference. The workshops offered include subject-area specific sessions in writing and study skills. We also have a wealth of online resources available to all students to help with assignments and exam preparation.

Other Opportunities

There are a range of options available to enhance your study at UNE, including

- opportunities for leadership and teamwork through community participation
- parliamentary internships
- international exchange programs as credit towards your UNE degree
- personal and academic support programs
- links and partnerships with industry, research organisations and training bodies.

What if you could study just the parts of a degree you need?

Our new Bespoke Courses give you the freedom to design your own qualification by choosing 2, 3 or 4 units from undergraduate and postgraduate degrees. Choose units from a single degree or mix and match across different degrees.

These are real degree units and, depending on your selection, you may come back later and complete a full degree.

- Choose from over 400 postgrad and undergrad units
- Pick from a single degree or mix and match across degrees
- Pay later with low interest finance
- Study online* across three study periods
- University Certificate of Completion
- 24/7 online tutor support

Design a Bespoke Course by choosing 2,3 or 4 units from over 400 in one of the following degree areas:

Undergraduate Degrees

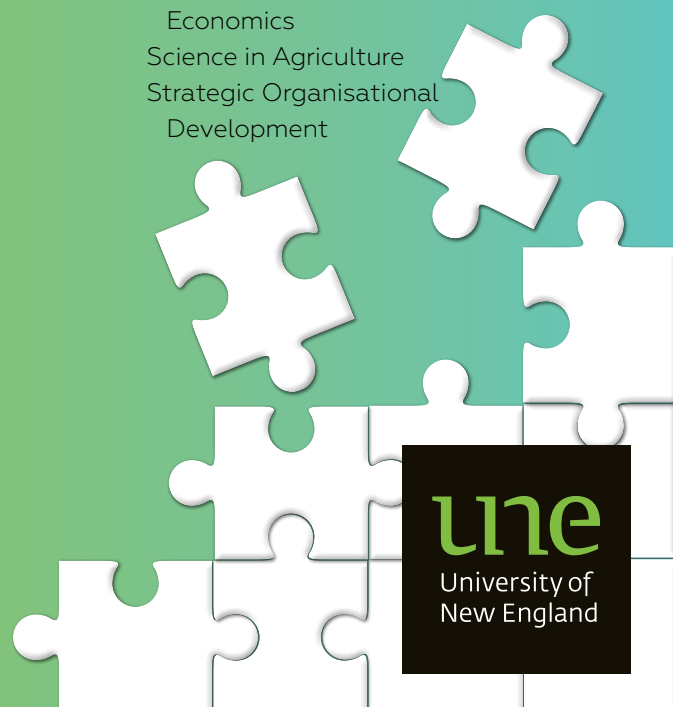
Accounting	International Business
Agribusiness	International Studies
Agricultural & Resource Economics	Languages
Agriculture	Media & Communications
Animal Science	Music
Arts	Organisational Leadership
Audiometry	Pharmacy
Biomedical Science	Psychological Science
Business	Rural Science
Clinical Exercise Physiology	Science
Computer Science	Social Science
Criminology	Social Work
Economics	Sustainability
Education & Teaching	Theatre & Performance
Environmental Science	Training & Development
Exercise & Sports Science	Urban & Regional Planning
Geoscience	Zoology
Historical Inquiry & Practice	

Postgraduate Degrees

Accounting
Agribusiness
Agriculture
Applied Linguistics
Arts
Business
Business Administration
Economics
Education
Environmental Science
H R Management
Information Technology
International Business Management
Professional Accounting
Regional Development Economics
Science in Agriculture
Strategic Organisational Development

Design your bespoke course at bespokecourses.com.au

* Some units may have on-campus components.



Key Dates 2018

Trimester One

(5 Mar – 18 June)

5 Mar	Lectures start
11 May	UNE Open Day
1 June	Lectures End
4 June – 18 June	Examinations

Trimester Two

(9 July – 19 Oct)

9 July	Lectures start
5 Oct	Lectures End
8 Oct – 19 Oct	Examinations

Trimester Three

(5 Nov – 11 Feb, 2019)

5 Nov	Lectures start
25 Jan	Lectures End
29 Jan – 11 Feb	Examinations

Key Dates 2019

Trimester One

(4 March – 17 June)

4 March	Lectures start
10 May	UNE Open Day
31 May	Lectures End
3 June – 17 June	Examinations

Trimester Two

(8 July – 21 Oct)

8 July	Lectures start
4 Oct	Lectures End
8 Oct – 21 Oct	Examinations

Trimester Three

(4 Nov 2019 - 10 Feb, 2020)

4 Nov	Lectures start
24 January	Lectures End
28 Jan – 10 Feb	Examinations

Contact us

More information, ask a question 24/7

or chat with us at: une.edu.au

Facebook: [UNEFutureStudents](https://www.facebook.com/UNEFutureStudents)

Phone: 1800 818 865

Not sure what to study?

Get a free analysis of your personality and the careers that best suit you, within 10 minutes using UNE's

MyFuture Finder



Get Your Free Report

une.edu.au/myfuturefinder

